

Jiashan Naite Precision Machinery Co., Ltd.

www.ntpm.cn



NAITE PRECISION MECHINERY

嘉善耐特精密机械有限公司



NAITE PRECISION MECHINERY

公司简介

Introduction

嘉善耐特精密机械有限公司是一家专业研发、设计、制造与销售自润滑材料和产品的顶尖企业之一。我们一直依靠专业的设计和研发团队，先进的设备，完善的制造工艺和检验手段，制造适合于各种工况条件下的自润滑材料和产品。产品主要有：NTB-10(DU)系列无油干式轴承、NTB-20(DX)系列边界润滑轴承，NTB-30系列耐高温轴承、NTB-40系列青铜轴承，NTB-50(650#)系列固体镶嵌自润滑轴承、NTB-60系列不锈钢轴承、NTB-70系列树脂轴承、NTB-80系列双金属轴承等。产品被广泛应用于汽机车行业、建筑工程机械、水利机械、风力发电、高速列车、塑胶机械、自动化生产线、塑料包装机械等需要传动而无法加油或较难形成油膜的部位。

“质量第一，客户至上”是我们的宗旨！耐特公司将提供客户最好的产品，合理的价格和完善的服务。携手耐特，共创双赢。

JIASHAN NAITE PRECISION MECHINERY CO., LTD is a the Professional design, made and sales self-lubricating bearing company. we are always depend on mature technic, advanced equipment, perfect art and inspectartifice, manufacture the self-lubricating bearing suit for kinds of operating condition, the products: NTB-10(DU) Oil-free dry bearing, NTB-20(DX) Boundary self-lubricating bearing, NTB-30 High-temperature bearings, NTB-40 Bronze bearings, NTB-50(650#) Solid lubricant embedded bearing, NTB-60 Stainless steel bearings, NTB-70 Resin bearing, NTB-80 Bi-metal bearings. It is widely applied to bus industry, buliding engineering machine, water conservancy machine, plastic machine printing packing machine and need drive or without oil or with little oil form lubrication. The product is deeply subjected to domestic and international customer's good opinion!

NAITE company will provide the best product, in reason price and flawless service to customers.



NAITE PRECISION MECHINERY

NAITE企业产品
汽车行业的应运



后门铰链



前门铰链



行李箱铰链



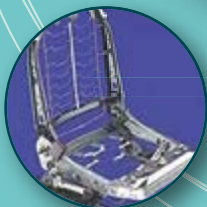
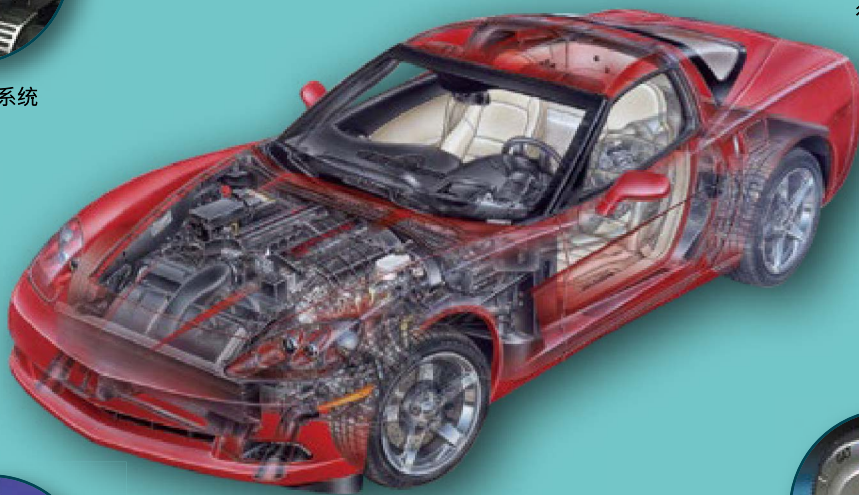
油门和制动系统



转向器



发动机涨紧轮



座椅



离合器



减震器



车桥、车轴

CATALOGUE

NTB-10

无给油轴承
Non-oil Bearing



P 01、13

NTB-11

干式无给油轴承
Dry Non-oil bearing



P 01、13

NTB-12

往复运动轴承
Reciprocate Self-lubricating Bearing



P 02、13

NTB-13

无给油轴承 (红色)
Non-oil Bearing



P 02、13

NTB-14

齿轮油泵轴承
Gear Pump Bearing



P 03、13

NTB-15

汽车张紧器专用轴承
Gear Pump Bearing



P 03、13

NTB-20

边界润滑轴承
Marginal-Lubrication Bearing



P 04、21

NTB-20Y

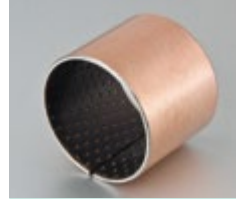
边界润滑轴承
Marginal-Lubrication Bearing



P 04、25

NTB-30

耐高温高压无给油轴承
Self-lubricating Bearing



P 05、21

NTB-40

铜基卷制轴承
Bronze Self-lubricating Bearing



P 05、29

NTB-60

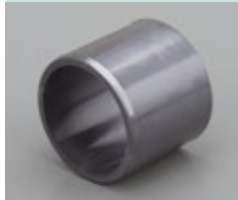
涂喷不锈钢无给油轴承
Non-oil Bearing Spray Coating



P 06、13

NTB-70

树脂系列轴承
Resin Bearing



P 06

NTB-80

双金属卷制轴承
Bi-metal Self-lubricating Bearing



P 07、31

NTB-82

双金属自润滑轴承
Bi-metal Self-lubricating Bearing



P 07、33

NTB-90

金属编制网无给油轴承
Metal Braid Non-Oil Bearing



P 08



低碳钢+铜粉+PTFE

NTB-10 无给油轴承 Non-oil Bearing

适用于无法加油或较难的工作部位，耐磨性能好、摩擦系数小、使用寿命长；走合性能好、低噪音、无污染、耐腐蚀性好；运转中形成的转移膜起到保护对磨轴的作用，无咬轴现象；对磨轴的加工要求低，减轻了用户加工成本。另外，NTB开发了应用于齿轮泵、柱塞泵等流体润滑条件下高速自润滑轴承NTB-10HP。在流体润滑条件下线速度可以达到10m/s，PV达到60N/mm²·m/s。

Apply to the oil or the more difficult parts of the work, wear resistance, low coefficient of friction, long life; good performance, low noise, no pollution, good corrosion resistance; running play in the protection of the formation of transfer film The role of axes grinding, no bite shaft phenomenon; low processing requirements of the shaft to reduce processing costs for users. In addition, NTB developed to used gear pumps, piston pumps and other fluid lubrication under high-speed self-lubricating bearings NTB-10HP. Lubrication conditions in the fluid off the assembly line speed can reach 10m / s, PV to 60N/mm²·m/s.

最大承载 Max. Load	静承载 Static	250 N/mm ²	使用温度 Temp.	-195°C ~ 280°C
	动承载 Dynamic	140 N/mm ²	摩擦系数 Friction coefficient	0.03 ~ 0.20
最高线速度 Max. Speed	干 Dry	2m/s	导热系数	42W (m·k) ⁻¹
	流体 Lubrication	>2m/s	热膨胀系数 coefficient of thermal expansion	
最大PV(干) Max. PV(Dry)	短时间 Short-term	3.6 N/mm ² ·m/s		
	连续 Continuos	1.8 N/mm ² ·m/s		



青铜基+铜粉+PTFE

NTB-11 干式无给油轴承 Dry Non-oil Bearing

适用于无法加油或较难的工作部位，耐磨性能好、摩擦系数小、使用寿命长；走合性能好、低噪音、无污染、耐腐蚀性好；运转中形成的转移膜起到保护对磨轴的作用，无咬轴现象；对磨轴的加工要求低，减轻了用户加工成本；由于基板是青铜，因此比NTB-10拥有比其他干式轴承更好的耐腐蚀性。

NTB-11 is of high safety factor, and is particularly appropriate for high temperature environment where no oil is efficient and where the machine must be under successive long period working condition. This is widely used in steel metallurgy industry such as bushes for roller grooves of successive casting machines, cement grouting pumps and screw conveyers for cement. It can also be composed in steel housing or fabricated into flanged bushes which can move both in radial and in axial directions.

最大承载 Max. Load	静承载 Static	250 N/mm ²	使用温度 Temp.	-195°C ~ 280°C
	动承载 Dynamic	140 N/mm ²	摩擦系数 Friction coefficient	0.03 ~ 0.20
最高线速度 Max. Speed	干 Dry	2m/s	导热系数	70W (m·k) ⁻¹
	流体 Lubrication	>2m/s	热膨胀系数 coefficient of thermal expansion	
最大PV(干) Max. PV(Dry)	短时间 Short-term	3.6 N/mm ² ·m/s		
	连续 Continuos	1.8 N/mm ² ·m/s		



低碳钢+铜粉+PTFE/纤维 (黄褐色)

NTB-12 往复运动轴承 Reciprocate Self-lubricating Bearing

该材料是根据减震器往复运动且侧向受力较大的特殊条件而开发的产品。它有很低的摩擦系数和较好的耐磨损性，能在半干燥条件下使用。产品主要用于汽车减震器、摩托车减震器、液压油缸等。

This material is based on reciprocating shock absorber and a larger lateral force developed the special conditions of the product. It has very low coefficient of friction and good wear resistance, can be used in semi-arid conditions. It widely used in automotive shock absorbers, motorcycle shock absorbers, hydraulic cylinders, etc.

最大承载 Max. Load	静承载 Static	250 N/mm ²	使用温度 Temp.	-195°C ~ 280°C
	动承载 Dynamic	140 N/mm ²		
最高线速度 Max. Speed	干 Dry	2m/s	摩擦系数 Friction coefficient	0.03 ~ 0.20
	流体 Lubrication	>2m/s		
最大PV(干) Max. PV(Dry)	短时间 Short-term	3.6 N/mm ² ·m/s	导热系数 Thermal conductivity	42W (m·k) ⁻¹
	连续 Continuous	1.8 N/mm ² ·m/s		
PV流体润滑	PV Hydrodynamic	30 N/mm ² ·m/s	热膨胀系数 coefficient of thermal expansion	11 × 10 ⁻⁶ k ⁻¹



低碳钢+铜粉+PTFE/纤维 (红色)

NTB-13 无给油轴承 (红色) Non-oil Bearing

适用于无法加油或较难的工作部位，耐磨性能好、摩擦系数小、使用寿命长；走合性能好、低噪音、无污染、耐腐蚀性好；运转中形成的转移膜起到保护对磨轴的作用，无咬轴现象；对磨轴的加工要求低，减轻了用户加工成本；同时NTB-13特殊的耐磨层设计在润滑条件上比其他的干式轴承具有更良好的耐磨性与极低的摩擦系数。

Apply to the oil or the more difficult parts of the work, wear resistance, low coefficient of friction, long life; go together good performance, low noise, no pollution, good corrosion resistance; running play in the protection of the formation of transfer film shaft, while the role of non-bite-axis phenomenon; the shaft, low processing requirements, reduce processing costs for users; while NTB-14 special wear-resistant lubricating layer design in dry conditions than other bearing has a better resistance to grindability and low coefficient of friction.

最大承载 Max. Load	静承载 Static	250 N/mm ²	使用温度 Temp.	-195°C ~ 280°C
	动承载 Dynamic	140 N/mm ²		
最高线速度 Max. Speed	干 Dry	2m/s	摩擦系数 Friction coefficient	0.03 ~ 0.20
	流体 Lubrication	>2m/s		
最大PV(干) Max. PV(Dry)	短时间 Short-term	3.6 N/mm ² ·m/s	导热系数 Thermal conductivity	42W (m·k) ⁻¹
	连续 Continuous	1.8 N/mm ² ·m/s		
PV流体润滑	PV Hydrodynamic	30 N/mm ² ·m/s	热膨胀系数 coefficient of thermal expansion	11 × 10 ⁻⁶ k ⁻¹



低碳钢+铜粉+PTFE

NTB-14 齿轮油泵轴承 Gear Pump Bearing

该产品与NTB-10具有相同结构，是齿轮油泵专用轴承。根据齿轮油泵的高PV值条件而设计的特殊配方产品。它具有摩擦系数小而稳定，耐磨性能好，抗冲击的特点，产品广泛应用于齿轮油泵、柱塞泵、叶片泵等。

NTB-14 Gear Pump Bearing has the same structure as NTB-10, it is special for gear pump. It is a special formula product devised by high PV value operational mode conditions of gear oil pump. Characterized by low friction factor, stability, well wearing performance and impact resistance, it has been widely applied to gear pumps, radial piston pumps and vane pumps etc.

最大承载 Max. Load	静承载 Static	250 N/mm ²	使用温度 Temp.	-195°C ~ 280°C
	动承载 Dynamic	140 N/mm ²	摩擦系数 Friction coefficient	0.03 ~ 0.20
最高线速度 Max. Speed	干 Dry	2m/s	导热系数	70W (m·k) ⁻¹
	流体 Lubrication	>2m/s	热膨胀系数 coefficient of thermal expansion	17 × 10 ⁻⁶ k ⁻¹
最大PV(干) Max. PV(Dry)	短时间 Short-term	3.6 N/mm ² ·m/s		
	连续 Continuos	1.8 N/mm ² ·m/s		



NTB-15 汽车张紧器专用轴承 Gear Pump Bearing

该产品由特殊材质铜网烧结为结构，比普通的铜粉烧结产品耐磨性能更好，它具有摩擦系数小而稳定，抗冲击特点，产品广泛应用于汽车张紧器。

The product is made of special material copper mesh sintered structure, better wear resistance than ordinary copper powder sintered products, it has a small friction coefficient and stability, impact resistance, the product is widely used in automotive tensioners.

最大承载压力 Max. Load	静承载 Static	250 N/mm ²
	动承载 Dynamic	140 N/mm ²
最高滑动速度 Max. Speed	干运行 Dry	2m/s
	流体 Lubrication	>2m/s
允许最高PV值(干) Max. PV(Dry)	短时间 Short-term	3.6 N/mm ² ·m/s
	连续 Continuos	1.8 N/mm ² ·m/s
适应温度范围 Temp.	Temp.	-195°C ~ 280°C
摩擦系数 Friction coefficient	Friction coefficient	0.03 ~ 0.20



低碳钢+铜粉+POM (纤维)

NTB-20 边界润滑轴承 Marginal-Lubrication Bearing

适用于高载低速下的旋转、摇摆运动以及在重载下经常启闭而无法加油的部位，在边界润滑条件下可长期使用而不用加油，过程加油将会大大提高轴套的使用寿命。耐磨层表面有规格的油穴可以作为储油孔使用。目前已广泛用于冶金机械、矿山机械、水利机械、汽机车、建筑机械、农用机械、轧钢机械等。

For high load low speed of rotation, oscillating motion and the heavy load can not open and close as often as the site, under the boundary lubrication conditions, long-term use without refueling, refueling process will greatly improve the life of sleeve. Wear-resistant surface layer of the oil hole size holes can be used as storage. Has been widely used in metallurgical machinery, mining machinery, irrigation machinery, motor vehicles, construction machinery, agricultural machinery, steel rolling machinery.

最大承载 Max. Load	静承载 Static	250 N/mm ²	使用温度 Temp.	-195°C ~ 280°C
	动承载 Dynamic	140 N/mm ²		摩擦系数 Friction coefficient
最高线速度 Max. Speed	旋转承载 Rotating oscillating	60 N/mm ²	流体 Lubrication	
	干 Dry	2m/s	导热系数 Thermal conductivity	42W (m·k) ⁻¹
最大PV(干) Max. PV(Dry)	流体 Lubrication	>2m/s	热膨胀系数 coefficient of thermal expansion	11 × 10 ⁻⁶ k ⁻¹
	短时间 Short-term	3.6 N/mm ² ·m/s		
	连续 Continuous	1.8 N/mm ² ·m/s		



低碳钢+铜粉+POM (纤维)

NTB-20Y 边界润滑轴承 Marginal-Lubrication Bearing

NTB-20Y边界润滑轴承，是在NTB-20的基础上改进而成。其性能与NTB-20相同，但表面不含铅，使用领域可以扩展至有环保要求的领域。目前该产品已应用于进口纺织设备、柱塞泵摆动部位、汽车操纵杆部位等中载、中速、油脂润滑的场合。

NTB-20Y lead free boundary lubrication bearing is improved on the basis of NTB-20. It can be Applied in the field where environment protection is required. Now it' widely used on textile machines, piston pump, steering system of automobile etc.

最大承载 Max. Load	静承载 Static	250 N/mm ²	使用温度 Temp.	-195°C ~ 280°C
	动承载 Dynamic	140 N/mm ²		摩擦系数 Friction coefficient
最高线速度 Max. Speed	旋转承载 Rotating oscillating	60 N/mm ²	流体 Lubrication	
	干 Dry	2m/s	导热系数 Thermal conductivity	42W (m·k) ⁻¹
最大PV(干) Max. PV(Dry)	流体 Lubrication	>2m/s	热膨胀系数 coefficient of thermal expansion	11 × 10 ⁻⁶ k ⁻¹
	短时间 Short-term	3.6 N/mm ² ·m/s		
	连续 Continuous	1.8 N/mm ² ·m/s		



低碳钢+铜粉+PI/PEEK

NTB-30 耐高温高压无给油轴承 Self-lubricating Bearing

适用于无法加油、较难加油或高温的工作部位，耐磨性能好、摩擦系数小、使用寿命长；走合性能好、低噪音、无污染、耐腐蚀性好；运转中形成的转移膜起到保护对磨轴的作用，无咬轴现象；对磨轴的加工要求低，减轻了用户加工成本；由于NTB-30工作表面采用特殊材料，因此NTB-30具有较好的耐高温性和高耐磨性。

Apply to the oil, fuel or high-temperature work more difficult parts, wear resistance, low coefficient of friction, long life; good performance, low noise, no pollution, good corrosion resistance; in operation since the formation of transfer film to protect the shaft, the role of non-bite-axis phenomenon; low processing requirements of the shaft to reduce processing costs for users; as NTB-30 work surface with special materials, so the NTB-30 has good high temperature and high wear resistance.

最大承载 Max. Load	静承载 Static	250 N/mm ²	使用温度 Temp.	-150°C ~ 250°C
	动承载 Dynamic	140 N/mm ²		
	旋转承载 Rotating oscillating	60 N/mm ²		
最高线速度 Max. Speed	干 Dry	5m/s	摩擦系数 Friction coefficient	0.03 ~ 0.20
	流体 Lubrication	>5m/s		
最大PV(干) Max. PV(Dry)	短时间 Short-term	4.8 N/mm ² ·m/s	导热系数 Thermal conductivity	50W (m·k) ⁻¹
	连续 Continuous	3.6 N/mm ² ·m/s		
			热膨胀系数 coefficient of thermal expansion	11*10 ⁻⁶ ·k ⁻¹



NTB-40 铜基卷制轴承 Bronze Self-lubricating Bearing

该轴套以CuSn8青铜为基材卷制而成的一中具有承载高，耐磨性能好的经济型轴承。标准的NTB-40产品工作表面布满规则的菱形油穴或穿孔油眼，起到储油或加油的作用，在起始运动时能较容易的形成油膜从而降低起始摩擦系数。主要运用农用机械、建筑机械等高载低速场合。

The bronze bushings as CuSn8 for the substrate has made of a high wear resistance good economic bearing. Standard NTB-40 product dissatisfaction rules diamond work surface oil hole or perforation oil eye, played the role of oil or fuel in the initial movement to form a film easier to reduce the initial friction coefficient. The main use of agricultural machinery, construction machinery where high load low speed.

最大承载 Max. Load	静承载 Static	120 N/mm ²	延伸率 Elongation	40%
	动承载 Dynamic	40N/mm ²		
最高线速度 (润滑)	Max. Speed (Lubrication)	2m/s	摩擦系数 Friction coefficient	0.08 ~ 0.25
	最大PV	Max. PV		
抗拉强度 硬度	Tensile strength	450 N/mm ²	热膨胀系数 Coef. of thermal expansion	18.5 × 10 ⁻⁶ k ⁻¹
	Hardness	HB 110-150		



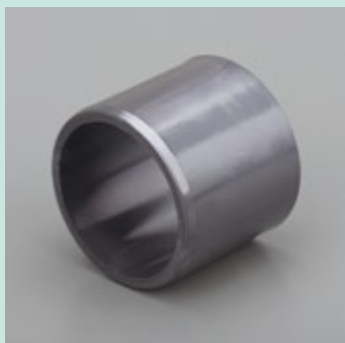
316+PTFE

NTB-60 涂喷不锈钢无给油轴承 Non-oil Bearing Spray Coating

以不锈钢材料为基体，表面涂喷PTFE组成的高耐蚀、耐磨轴承。该材料特别适应强酸、强碱、轻载中低速的场合，其耐磨性能明显优于单体PTFE轴套和石墨轴套。目前该产品已广泛用于化工酸碱流量计、泵、阀以及海洋工业中耐腐蚀滑动的部位。

Stainless steel material as the substrate, coated with PTFE spray composed of high corrosion, wear-resistant bearings. The material specially adapted to acid, alkali, light-load low-speed situations, its wear resistance is superior to single PTFE sleeve and graphite sleeve. The product has been widely used in chemical PH meter, pumps, valves, and corrosion-resistant marine industry in the sliding parts.

最大承载 Max. Load	静承载 Static	250 N/mm ²	使用温度 Temp.	-195°C ~ 280°C
	动承载 Dynamic	140 N/mm ²	摩擦系数 Friction coefficient	0.03 ~ 0.20
最高线速度 Max. Speed	干 Dry	2m/s	导热系数 Thermal conductivity	42W (m·k) ⁻¹
	流体 Lubrication	> 2m/s	热膨胀系数 coefficient of thermal expansion	11 × 10 ⁻⁶ k ⁻¹
最大PV(干) Max. PV(Dry)	短时间 Short-term	3.6 N/mm ² ·m/s		
	连续 Continuous	1.8 N/mm ² ·m/s		



NTB-70 树脂系列轴承 Resin Bearing

以各种优质工程塑料采用注塑工艺加工而成，适合于大批量生产，制造成本低。具有自润滑性能可免维护免加油，承载能力高，无咬轴现象，耐腐蚀性好，摩擦系数低，相比金属基轴承具有重量轻，生产成本低，生产效率高等特点。广泛运用于汽机车行业、传真机、复印机、食品机械、健身机械、化工行业等。

Using a variety of high-quality plastic injection molding process, it suitable for mass production, low manufacturing cost. Self-lubricating performance can be maintenance-free oil-free, high carrying capacity, no bite shaft phenomenon, good corrosion resistance, low coefficient of friction compared to metal-based bearings, light weight, low production costs, high production efficiency. Widely used in motor vehicles industry, fax machines, copiers, food machinery, fitness machinery, chemical industry, etc.

最大承载 Max. Load	静承载 Static	180 N/mm ²	使用温度 Temp.	-40°C ~ 80°C
	动承载 Dynamic	100 N/mm ²	摩擦系数 Friction coefficient	0.05 ~ 0.20
最高线速度 Max. Speed	干 Dry	1m/s	导热系数 Thermal conductivity	0.2W (m·k) ⁻¹
	流体 Lubrication	> 1m/s	热膨胀系数 coefficient of thermal expansion	10 ⁻¹ *k ⁻⁵
最大PV(干) Max. PV(Dry)	短时间 Short-term	1 N/mm ² ·m/s		
	连续 Continuous	0.8 N/mm ² ·m/s		



NTB-80 双金属卷制轴承 Bi-metal Self-lubricating Bearing

以碳钢为基体表面烧结铜粉，使用于高载低速下的旋转、摇摆运动，铜粉面可根据要求加工出各种油孔、油槽。目前已广泛用于矿山机械、汽机车、建筑机械、农用机械、轧钢机械等。

以碳钢为基体表面烧结铜粉，使用于高载低速下的旋转、摇摆运动，铜粉面可根据要求加工出各种油孔、油槽。目前已广泛用于矿山机械、汽机车、建筑机械、农用机械、轧钢机械等。

最大承载 Max. Load	静承载 Static	120 N/mm ²	屈服强度 Yield point	350 N/mm ²
	动承载 Dynamic	40 N/mm ²	使用温度 Temp.	-40°C ~ 250°C
最高线速度	Max. Speed	2 m/s	摩擦系数 Friction coefficient	0.08 ~ 0.20
最大PV	Max. PV	2.8 N/mm ² ·m/s	导热系数 Thermal conductivity	60W (m·k) ⁻¹
抗剪切强度	Breaking Load	350 N/mm ²	热膨胀系数 Coef. of thermal expansion	40 × 10 ⁻⁶ k ⁻¹



NTB-82 双金属自润滑轴承 Bi-metal Self-lubricating Bearing

该产品以优质低碳钢板为基体，表面采用特殊工艺轧制铝锡合金。它有中等疲劳强度和承载能力，良好的耐腐蚀性，较好的轴承表面性能，产品适用于内燃机主轴和连杆衬套、空压机、制冷机用衬套。

It is made of high quality low-carbon steel backing, rolled with aluminium-tin alloy on surface with special techniques. It has medium fatigue strength, load capacity, good corrosion-resistance and super surface property. It is mainly applied to main shaft and con-rod shaft of internal combustion engine, pressure squeeze machine and cooling machine.

性能指标 Performance Index	有关数据 Data	
最大承载压力 P Max Load Capacity P	100N/mm ²	
最大线速度 V Max Line Speed V	油润滑 Oil Lubrication	25m/s
最高PV值 Maximum PV Value	脂润滑 Grease Lubrication	6N/mm ² ·m/s
合金硬度 Alloy Hardness	30~40HB	
合金材料 Alloy Material	AlSn20Cu	



NTB-90 金属编制网无给油轴承 Metal Braid Non-Oil Bearing

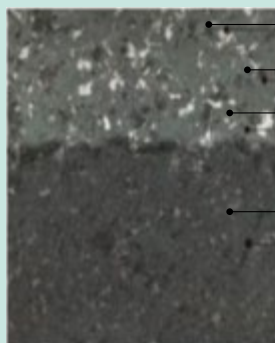
NTB-90以金属网为基材，表面附着以PTFE为主的耐磨材料。产品广泛运用化工行业、食品工业、汽机车、办公机械、纺织机械、汽车门铰链风轻载但需要自润滑材料，可运用于不同的领域。这种产品更易于安装。

NTB-90 with metal mesh to the substrate, the surface attached to the wear-resistant PTFE-based materials. The products are widely used in chemical industry, food industry, motor vehicles, office machinery, textile machinery, automobile door hinges fine, but need to set self-lubricating material that can be used in different areas. This product is easier to install.

最大承载 Max. Load	静承载 Static	350 N/mm ²
	动承载 Dynamic	180 N/mm ²
最高速度 Max. Speed	干运行 Dry	1m/s
	流体 Lubrication	> 1m/s
使用温度	Temp.	-195°C ~ 260°C
摩擦系数	Friction coefficient	0.03 ~ 0.20

NTB-06F 标准型缠绕轴承

NTB-06F Standard Type Bearings



中等强度纤维 Medium Strength Fiber

PTFE纤维 PTFE Fiber

润滑剂 Lubricant

玻纤增强环氧树脂基体
Enhanced Epoxy Resin

滑动层
Lubricate Layer

轴承材料结构

内衬：以 PTFE 纤维与特种高强纤维缠绕而成的织物作为滑动层。

外衬：以高强度玻璃纤维增强高温高强环氧树脂作为承载层。

Material structure

Lubricate layer: Continuous wound PTFE and high-strength fibers encapsulated in an internally

lubricated, high temperature filled epoxy resin.

Backing: Continuous wound glass fiber encapsulated in a high temperature epoxy resin.

典型特征

中高的动承载能力
很好的抗冲击性能
较好的耐摩擦特性
较强的耐腐蚀能力
较低的摩擦系数



Feature

Medium to high load capacity

Good impact resistance

Nice chemical resistance

Low friction and good anti-wear properties

轴承技术数据 Technical Data

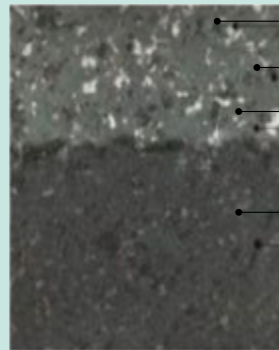
项目 Designation	单位 Unit	数据 Data
最大荷载 Max.Load	静荷载 Static load 动荷载 Dynamic load	240 150
最大滑动线速度 Max.speed	m/s	0.20
极限 PV 值 Max.PV	MPa*m/s	2.0
摩擦系数 Coefficient of friction	-	0.03-0.12
连续工作温度 Working Temp	°C	±180

典型应用 Typical Application

港口机械 Port machinery
建筑机械 Construction machinery
起重机械 Lifting machinery
包装机械 Package machinery
水利机械 Hydraulic machinery

NTB-21F 高承载缠绕轴承

NTB-21F High Load Bearings



- 特种高强纤维 Strength Fiber
 - PTFE纤维 PTFE Fiber
 - 润滑剂 Lubricant
 - 玻纤增强环氧树脂基体 Enhanced Epoxy Resin
- 滑动层 Lubricate Layer

轴承材料结构

内衬: 以 PTFE 纤维与特种高强纤维缠绕而成的织物作为滑动层。

外衬: 以高强度玻璃纤维增强高温高强环氧树脂作为承载层。

Material structure

Lubricate layer: Continuous wound PTFE and high-strength fibers encapsulated in an internally lubricated, high temperature filled epoxy resin.

Backing: Continuous wound glass fiber encapsulated in a high temperature epoxy resin.

典型特征

较高的动承载能力
很好的抗冲击性能
极好的耐摩擦特性
较强的耐腐蚀能力
较低的摩擦系数



Feature

Very high load capacity
Excellent impact resistance
Nice chemical resistance
Low friction and good anti-wear properties

轴承技术数据 Technical Data

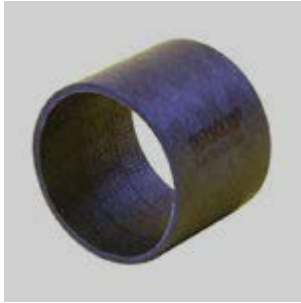
项目 Designation	单位 Unit	数据 Data
最大荷载 Max.Load	静荷载 Static load 动荷载 Dynamic load	240 160
最大滑动线速度 Max.speed	m/s	0.20
极限 PV 值 Max.PV	MPa*m/s	2.0
摩擦系数 Coefficient of friction	-	0.03-0.12
连续工作温度 Working Temp	°C	±180

典型应用 Typical Application

港口机械 Port machinery
起重机械 Lifting machinery
包装机械 Package machinery
水利机械 Hydraulic machinery
建筑机械 Construction machinery
低速重载设备 low-speed and heavy-duty equipment

纤维缠绕轴承尺寸表 (壁厚 2.5mm)

Bearings Size Table (Wall 2.5mm)

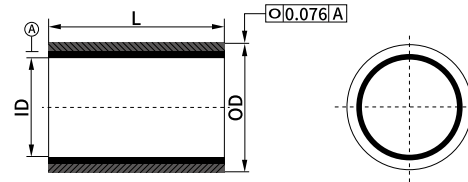


可供规格 Specifications:

订货型号 Order Spec.

B-21-20 25-30
 长度 Length
 外径 OD
 内径 ID

材料 Materials:
 B-32, B-31, B-21, B-06, B-03, B-01



长度公差表 Length tolerance table			
	≤75mm	>75 to <150mm	≥150mm
ID	>75 to ≤120mm -1.00mm	>75 to <150mm -1.00mm	≥150mm -1.50mm
OD	≤75mm -0.50mm	>75 to <150mm -1.00mm	≥150mm -1.50mm

订货型号 Order	轴承尺寸 Bearing Size		推荐尺寸 Recommend		装配间隙 Assembly	运行间隙 Running	参考长度 L Standard
Spec.	内径 ID	外径 OD	轴 Shaft	孔 Housing	Interference	Clearance	Length
2025-L	20 ^{+0.196} / _{+0.116}	25 ^{+0.096} / _{+0.046}	20 ⁰ / _{-0.021}	25 ^{+0.021} / ₀	0.025-0.096	0.020-0.192	15、20、30
2227-L	22 ^{+0.196} / _{+0.116}	27 ^{+0.096} / _{+0.046}	22 ⁰ / _{-0.021}	27 ^{+0.021} / ₀	0.025-0.096	0.025-0.192	15、20、30
2530-L	25 ^{+0.196} / _{+0.116}	30 ^{+0.096} / _{+0.046}	25 ⁰ / _{-0.021}	30 ^{+0.021} / ₀	0.025-0.096	0.020-0.192	20、30、40
2833-L	28 ^{+0.200} / _{+0.120}	33 ^{+0.100} / _{+0.050}	28 ⁰ / _{-0.021}	33 ^{+0.025} / ₀	0.025-0.100	0.020-0.196	20、30、40
3035-L	30 ^{+0.200} / _{+0.120}	35 ^{+0.100} / _{+0.050}	30 ⁰ / _{-0.021}	35 ^{+0.025} / ₀	0.025-0.100	0.020-0.196	20、30、40
3540-L	35 ^{+0.200} / _{+0.120}	40 ^{+0.100} / _{+0.050}	35 ⁰ / _{-0.025}	40 ^{+0.025} / ₀	0.025-0.100	0.020-0.200	30、40、50
4045-L	40 ^{+0.200} / _{+0.120}	45 ^{+0.100} / _{+0.050}	40 ⁰ / _{-0.025}	45 ^{+0.025} / ₀	0.025-0.100	0.020-0.200	30、40、60
4550-L	45 ^{+0.230} / _{+0.130}	50 ^{+0.105} / _{+0.055}	45 ⁰ / _{-0.025}	50 ^{+0.025} / ₀	0.025-0.105	0.020-0.230	30、40、60
5055-L	50 ^{+0.230} / _{+0.130}	55 ^{+0.105} / _{+0.055}	50 ⁰ / _{-0.025}	55 ^{+0.030} / ₀	0.025-0.105	0.020-0.230	40、50、60
5560-L	55 ^{+0.245} / _{+0.145}	60 ^{+0.120} / _{+0.070}	55 ⁰ / _{-0.030}	60 ^{+0.030} / ₀	0.040-0.120	0.025-0.235	40、55、70
6065-L	60 ^{+0.245} / _{+0.145}	65 ^{+0.120} / _{+0.070}	60 ⁰ / _{-0.030}	65 ^{+0.030} / ₀	0.040-0.120	0.025-0.235	40、60、80
6570-L	65 ^{+0.245} / _{+0.145}	70 ^{+0.120} / _{+0.070}	65 ⁰ / _{-0.030}	70 ^{+0.030} / ₀	0.040-0.120	0.025-0.235	50、60、80
7075-L	70 ^{+0.245} / _{+0.145}	75 ^{+0.120} / _{+0.070}	70 ⁰ / _{-0.030}	75 ^{+0.030} / ₀	0.040-0.120	0.025-0.235	50、70、90
7580-L	75 ^{+0.275} / _{+0.175}	80 ^{+0.120} / _{+0.070}	75 ⁰ / _{-0.030}	80 ^{+0.030} / ₀	0.040-0.125	0.050-0.265	50、70、90
8085-L	80 ^{+0.275} / _{+0.175}	85 ^{+0.125} / _{+0.075}	80 ⁰ / _{-0.030}	85 ^{+0.035} / ₀	0.040-0.125	0.050-0.265	60、80、100
8590-L	85 ^{+0.275} / _{+0.175}	90 ^{+0.125} / _{+0.075}	85 ⁰ / _{-0.035}	90 ^{+0.035} / ₀	0.040-0.125	0.050-0.270	60、80、100
9095-L	90 ^{+0.275} / _{+0.175}	95 ^{+0.125} / _{+0.075}	90 ⁰ / _{-0.035}	95 ^{+0.035} / ₀	0.050-0.135	0.050-0.270	60、80、120
95100-L	95 ^{+0.310} / _{+0.185}	105 ^{+0.125} / _{+0.075}	95 ⁰ / _{-0.035}	105 ^{+0.035} / ₀	0.050-0.135	0.050-0.270	60、80、120
100105-L	100 ^{+0.310} / _{+0.185}	110 ^{+0.135} / _{+0.085}	100 ⁰ / _{-0.035}	110 ^{+0.035} / ₀	0.050-0.135	0.050-0.295	80、100、120
110115-L	110 ^{+0.315} / _{+0.190}	115 ^{+0.135} / _{+0.085}	110 ⁰ / _{-0.035}	115 ^{+0.035} / ₀	0.050-0.140	0.050-0.300	80、100、120
120125-L	120 ^{+0.340} / _{+0.215}	125 ^{+0.135} / _{+0.085}	120 ⁰ / _{-0.035}	125 ^{+0.040} / ₀	0.050-0.165	0.050-0.325	100、120、150
130135-L	130 ^{+0.340} / _{+0.215}	135 ^{+0.165} / _{+0.090}	130 ⁰ / _{-0.040}	135 ^{+0.040} / ₀	0.050-0.165	0.050-0.330	100、120、150
160165-L	160 ^{+0.340} / _{+0.215}	165 ^{+0.165} / _{+0.090}	160 ⁰ / _{-0.040}	165 ^{+0.040} / ₀	0.050-0.165	0.050-0.330	120、150、180

纤维缠绕轴承尺寸表 (壁厚5mm)

Bearings Size Table (Wall 5mm)

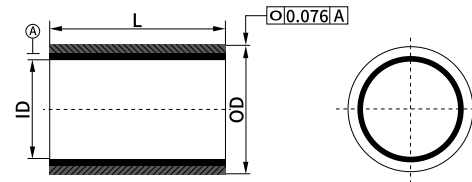


可供规格 Specifications:

订货型号 Order Spec.

B-21-20 25-30
 长度 Length
 外径 OD
 内径 ID

材料 Materials:
 B-32,B-31,B-21,B-06,B-03,B-01



长度公差表 Length tolerance table			
	≤75mm	>75 to <150mm	≥150mm
ID	>75 to ≤120mm -1.00mm	>75 to <150mm -1.00mm	≥150mm -1.50mm
	>120 to ≤150mm -1.00mm	>75 to <150mm -1.50mm	≥150mm -1.50mm

订货型号 Order	轴承尺寸 Bearing Size		推荐尺寸 Recommend		装配间隙 Assembly	运行间隙 Running	参考长度 L Standard
	内径 ID	外径 OD	轴 Shaft	孔 Housing	Interference	Clearance	Length
2030-L	20 ^{+0.196} / _{+0.116}	30 ^{+0.096} / _{+0.046}	20 ⁰ / _{-0.021}	30 ^{+0.021} / ₀	0.025-0.096	0.020-0.192	15、20、30
2232-L	22 ^{+0.196} / _{+0.116}	32 ^{+0.096} / _{+0.046}	22 ⁰ / _{-0.021}	32 ^{+0.021} / ₀	0.025-0.096	0.025-0.192	15、20、30
2535-L	25 ^{+0.196} / _{+0.116}	35 ^{+0.096} / _{+0.046}	25 ⁰ / _{-0.021}	35 ^{+0.021} / ₀	0.025-0.096	0.020-0.192	20、30、40
2838-L	28 ^{+0.200} / _{+0.120}	38 ^{+0.100} / _{+0.050}	28 ⁰ / _{-0.021}	38 ^{+0.025} / ₀	0.025-0.100	0.020-0.196	20、30、40
3040-L	30 ^{+0.200} / _{+0.120}	40 ^{+0.100} / _{+0.050}	30 ⁰ / _{-0.021}	40 ^{+0.025} / ₀	0.025-0.100	0.020-0.196	20、30、40
3545-L	35 ^{+0.200} / _{+0.120}	45 ^{+0.100} / _{+0.050}	35 ⁰ / _{-0.025}	45 ^{+0.025} / ₀	0.025-0.100	0.020-0.200	30、40、50
4050-L	40 ^{+0.200} / _{+0.120}	50 ^{+0.100} / _{+0.050}	40 ⁰ / _{-0.025}	50 ^{+0.025} / ₀	0.025-0.100	0.020-0.200	30、40、60
4555-L	45 ^{+0.230} / _{+0.130}	55 ^{+0.105} / _{+0.055}	45 ⁰ / _{-0.025}	55 ^{+0.025} / ₀	0.025-0.105	0.020-0.230	30、40、60
5060-L	50 ^{+0.230} / _{+0.130}	60 ^{+0.105} / _{+0.055}	50 ⁰ / _{-0.025}	60 ^{+0.030} / ₀	0.025-0.105	0.020-0.230	40、50、60
5565-L	55 ^{+0.245} / _{+0.145}	65 ^{+0.120} / _{+0.070}	55 ⁰ / _{-0.030}	65 ^{+0.030} / ₀	0.040-0.120	0.025-0.235	40、55、70
6070-L	60 ^{+0.245} / _{+0.145}	70 ^{+0.120} / _{+0.070}	60 ⁰ / _{-0.030}	70 ^{+0.030} / ₀	0.040-0.120	0.025-0.235	40、60、80
6575-L	65 ^{+0.245} / _{+0.145}	75 ^{+0.120} / _{+0.070}	65 ⁰ / _{-0.030}	75 ^{+0.030} / ₀	0.040-0.120	0.025-0.235	50、60、80
7080-L	70 ^{+0.245} / _{+0.145}	80 ^{+0.120} / _{+0.070}	70 ⁰ / _{-0.030}	80 ^{+0.030} / ₀	0.040-0.120	0.025-0.235	50、70、90
7585-L	75 ^{+0.275} / _{+0.175}	85 ^{+0.120} / _{+0.070}	75 ⁰ / _{-0.030}	85 ^{+0.030} / ₀	0.040-0.125	0.050-0.265	50、70、90
8090-L	80 ^{+0.275} / _{+0.175}	90 ^{+0.125} / _{+0.075}	80 ⁰ / _{-0.030}	90 ^{+0.035} / ₀	0.040-0.125	0.050-0.265	60、80、100
8595-L	85 ^{+0.275} / _{+0.175}	95 ^{+0.125} / _{+0.075}	85 ⁰ / _{-0.035}	95 ^{+0.035} / ₀	0.040-0.125	0.050-0.270	60、80、100
90100-L	90 ^{+0.275} / _{+0.175}	100 ^{+0.125} / _{+0.075}	90 ⁰ / _{-0.035}	100 ^{+0.035} / ₀	0.050-0.135	0.050-0.270	60、80、120
95105-L	95 ^{+0.310} / _{+0.185}	105 ^{+0.125} / _{+0.075}	95 ⁰ / _{-0.035}	105 ^{+0.035} / ₀	0.050-0.135	0.050-0.270	60、80、120
100110-L	100 ^{+0.310} / _{+0.185}	110 ^{+0.135} / _{+0.085}	100 ⁰ / _{-0.035}	110 ^{+0.035} / ₀	0.050-0.135	0.050-0.295	80、100、120
110120-L	110 ^{+0.315} / _{+0.190}	120 ^{+0.135} / _{+0.085}	110 ⁰ / _{-0.035}	120 ^{+0.035} / ₀	0.050-0.140	0.050-0.300	80、100、120
120130-L	120 ^{+0.340} / _{+0.215}	130 ^{+0.135} / _{+0.085}	120 ⁰ / _{-0.035}	130 ^{+0.040} / ₀	0.050-0.165	0.050-0.325	100、120、150
130140-L	130 ^{+0.340} / _{+0.215}	140 ^{+0.165} / _{+0.090}	130 ⁰ / _{-0.040}	140 ^{+0.040} / ₀	0.050-0.165	0.050-0.330	100、120、150
140150-L	140 ^{+0.340} / _{+0.215}	150 ^{+0.165} / _{+0.090}	140 ⁰ / _{-0.040}	150 ^{+0.040} / ₀	0.050-0.165	0.050-0.330	100、150、180
150160-L	150 ^{+0.340} / _{+0.215}	160 ^{+0.165} / _{+0.090}	150 ⁰ / _{-0.040}	160 ^{+0.040} / ₀	0.050-0.165	0.050-0.330	120、150、180

MORE...

NTB-10, NTB-11, NTB-12, NTB-13, NTB-14, NTB-15, NTB-60

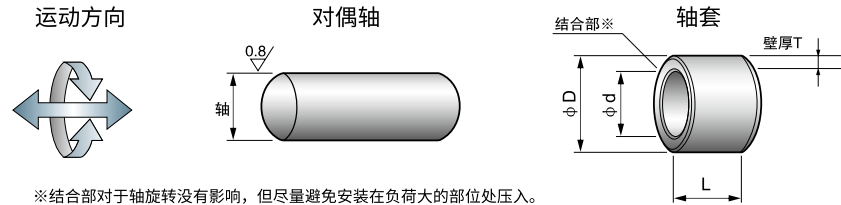
轴套 Cylindrical Bushes (内径I.D ϕ 5~ ϕ 40)



请从适用的内径、外径、长度中选择零件号
(例)内径15mm、长度10mm的情况下

NTB-10 - 1510

请指定上述零件号



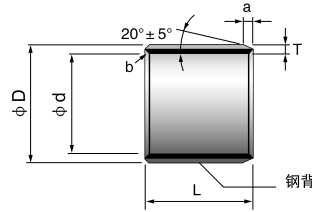
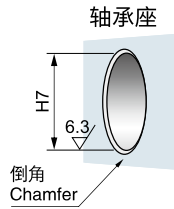
※结合部对于轴旋转没有影响，但尽量避免安装在负荷大的部位处压入。

轴 shaft	座孔housing		内径		外径		壁厚		长度 L ⁰ _{-0.40}				
	H7		∅ d	∅ D	T		4	5	6	8	10		
5	-0.010 -0.022	7	+0.015 0	5	7	+0.055 +0.025	1.0	+0.005 -0.020					
6	-0.013 -0.028	8	"	6	8	"	"	"	0604	0505			
7	"	9	"	7	9	"	"	"			0606	0608	
8	"	10	"	8	10	"	"	"			0806	0808	0810
10	"	12	+0.018 0	10	12	+0.065 +0.030	"	"				1008	1010
12	-0.016 -0.034	14	"	12	14	"	"	"				1208	1210
13	"	15	"	13	15	"	"	"					1310
14	"	16	"	14	16	+0.065 +0.035	"	"		1405			1410
15	"	17	"	15	17	"	"	"					1510
16	"	18	"	16	18	"	"	"					1610
17	"	19	+0.021 0	17	19	+0.075 +0.035	"	"					1710
18	"	20	"	18	20	"	"	"					1810
20	-0.020 -0.041	23	"	20	23	"	1.5	+0.005 -0.025					2010
22	"	25	"	22	25	"	"	"					2210
24	"	27	"	24	27	"	"	"					
25	"	28	"	25	28	"	"	"					2510
28	"	32	+0.025 0	28	32	+0.085 +0.045	2.0	+0.005 -0.030					
30	"	34	"	30	34	"	"	"					
32	-0.025 -0.050	36	"	32	36	"	"	"					
35	"	39	"	35	39	"	"	"					
37	"	41	"	37	41	"	"	"					
38	"	42	"	38	42	"	"	"					
40	"	44	"	40	44	"	"	"					

注：本公司可以按客户需求，生产非标产品。 Note: we can produce as per your drawings.

NTB-10, NTB-11, NTB-12, NTB-13, NTB-14, NTB-15, NTB-60

轴套 Cylindrical Bushes (内径I.D ϕ 5~ ϕ 40)



a:外径倒角 内径 ϕ 0以上(mm)

T	1.0	1.5	2.0
a	0.5	0.8	1.0

b:内径倒角 内径 ϕ 0以上(mm)

T	1.0	1.5	2.0
b	C0.5	C0.8	C1.0

※内径 ϕ 0不到的内外径倒角去除毛刺程度即可

长度 L $\begin{smallmatrix} 0 \\ -0.40 \end{smallmatrix}$								内径
12	15	20	25	30	35	40	50	ϕ d
								5
								6
								7
0812	0815							8
1012	1015	1020						10
1212	1215	1220	1225					12
		1320						13
1412	1415	1420	1425					14
1512	1515	1520	1525					15
1612	1615	1620	1625					16
		1720						17
	1815	1820	1825					18
	2015	2020	2025	2030				20
	2215	2220	2225	2230				22
	2415	2420	2425	2430				24
	2515	2520	2525	2530			2550	25
	2815	2820	2825	2830				28
	3015	3020	3025	3030		3040	3050	30
		3220		3230				32
		3520		3530	3535	3540		35
		3720						37
		3820		3830		3840		38
		4020		4030		4040	4050	40

NTB-10, NTB-11, NTB-12, NTB-13, NTB-14, NTB-15, NTB-60

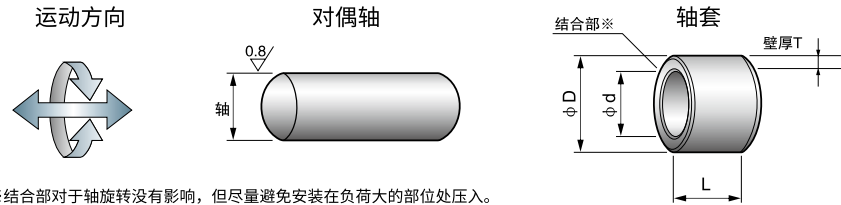
轴套 Cylindrical Bushes (内径I.D ϕ 45~ ϕ 260)



请从适用的内径、外径、长度中选择零件号
(例)内径60mm、长度50mm的情况下

NTB-10 - 6050

请指定上述零件号

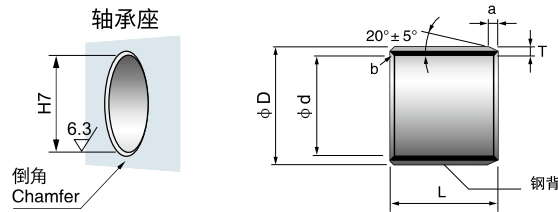


轴 shaft	座孔housing		内径		外径		壁厚		长度 L ⁰ _{-0.40}				
	$\phi H7$	ϕd	ϕD	ϕD	T	20	25	30	40	50			
45	-0.025 -0.050	50	+0.025 0	45	50	+0.085 +0.045	2.5	+0.005 -0.040	4520	4525	4530	4540	4550
50	"	55	+0.030 0	50	55	+0.100 +0.055	"	"	5020		5030	5040	5050
55	-0.030 -0.060	60	"	55	60	"	"	"			5530	5540	5550
60	"	65	"	60	65	"	"	"			6030	6040	6050
65	"	70	"	65	70	"	"	"			6530	6540	6550
70	"	75	"	70	75	"	"	"				7040	7050
75	"	80	"	75	80	"	"	"			7530	7540	7550
80	0 -0.030	85	+0.035 0	80	85	+0.120 +0.070	"	-0.010 -0.060				8040	8050
85	0 -0.035	90	"	85	90	"	"	"				8540	
90	"	95	"	90	95	"	"	"				9040	9050
95	"	100	"	95	100	"	"	"					9550
100	"	105	"	100	105	"	"	"					10050
105	"	110	"	105	110	"	"	"					
110	"	115	"	110	115	"	"	"					
115	"	120	"	115	120	"	"	"					
120	"	125	+0.040 0	120	125	+0.170 +0.100	"	-0.035 -0.085					
125	0 -0.040	130	"	125	130	"	"	"					
130	"	135	"	130	135	"	"	"					
135	"	140	"	135	140	"	"	"					
140	"	145	"	140	145	"	"	"					
150	"	155	"	150	155	"	"	"					
160	"	165	"	160	165	"	"	"					
180	"	185	+0.046 0	180	185	+0.210 +0.130	"	"					
190	0 -0.046	195	"	190	195	"	"	"					
200	"	205	"	200	205	"	"	"					
220	"	225	"	220	225	"	"	"					
250	"	255	+0.052 0	250	255	+0.260 +0.170	"	"					
260	"	265	"	260	265	"	"	"					

注: 本公司可以按客户需求, 生产非标产品。 Note: we can produce as per your drawings.

NTB-10, NTB-11, NTB-12, NTB-13, NTB-14, NTB-15, NTB-60

轴套 Cylindrical Bushes (内径I.D ϕ 45~ ϕ 260)



a:外径倒角(mm)

T	2.0	2.5
a	1.0	1.0

b:内径倒角(mm)

T	2.0	2.5
b	C0.5	C0.5

长度 L ⁰ _{-0.40}					内径
60	70	80	100	115	ϕ d
					45
5060					50
5560					55
6060	6070				60
6560	6570				65
7060	7070	7080			70
7560	7570	7580			75
8060	8070	8080	80100		80
8560		8580	85100		85
9060		9080	90100		90
9560		9580	95100		95
10060		10080		100115	100
10560		10580		105115	105
11060		11080		110115	110
11560		11580			115
12060		12080	120100		120
			125100		125
13060		13080	130100		130
		13580	135100		135
14060		14080	140100		140
15060		15080	150100		150
16060		16080	160100	160115	160
		18080	180100		180
		19080	190100		190
20060		20080	200100		200
		22080	220100		220
		25080	250100		250
		26080	260100		260

NTB-10F, NTB-11F, NTB-12F, NTB-13F, NTB-14F, NTB-15F, NTB-60F

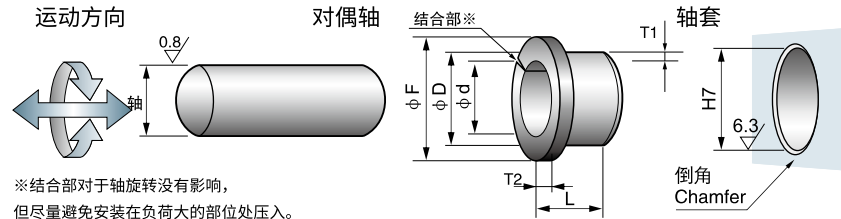
法兰轴套 Flanged Bushes



请从适用的内径、外径、长度中选择零件号
(例)内径20mm、长度10mm的情况下

NTB-10F-2010

请指定上述零件号

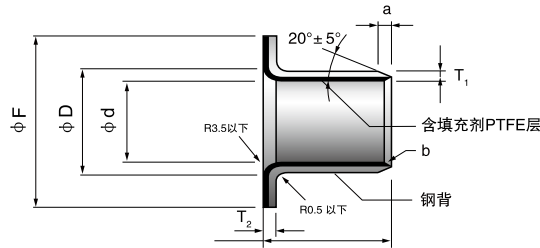


轴 shaft		座孔housing		内径 ∅d	外径 ∅D	法兰		壁厚 T1	长度 L±0.25				
		H7				∅F±0.5	T ₂ ⁰ _{-0.2}		3	4	5	6	
5	-0.010 -0.022	7	+0.015 0	5	7	10	1.0	1.0	+0.005 -0.020			0505	0506
6	-0.013 -0.028	8	"	6	8	12	"	"	-			0605	0606
7	"	9	"	7	9	13	"	"	-			0705	
8	"	10	"	8	10	15	"	"	-				0806
9	"	11	+0.018 0	9	11	17	"	"	-				1006
10	"	12	"	10	12	18	"	"	-				1206
12	-0.016 -0.034	14	"	12	14	20	"	"	-				
13	"	15	"	13	15	21	"	"	-				
14	"	16	"	14	16	22	"	"	-				
15	"	17	"	15	17	23	"	"	-				
16	"	18	"	16	18	24	"	"	-				
18	"	20	+0.021 0	18	20	26	"	"	-				
20	-0.020 -0.041	23	"	20	23	30	1.5	1.5	+0.005 -0.025				
22	"	25	"	22	25	32	"	"	-				
24	"	27	"	24	27	34	"	"	-				
25	"	28	"	25	28	35	"	"	-				
26	"	30	"	26	30	38	2.0	2.0	+0.005 -0.030				
28	"	32	+0.025 0	28	32	40	"	"	-				
30	"	34	"	30	34	42	"	"	-				
31	-0.025 -0.050	35	"	31	35	43	"	"	-				
32	"	36	"	32	36	44	"	"	-				
35	"	39	"	35	39	47	"	"	-				
38	"	42	"	38	42	52	"	"	-				
40	"	44	"	40	44	53	"	"	-				
45	"	50	"	45	50	60	2.5	2.5	+0.005 -0.040				
50	"	55	+0.030 0	50	55	65	"	"	-				
55	-0.030 -0.060	60	"	55	60	70	"	"	-				
60	"	65	"	60	65	75	"	"	-				

注：本公司可以按客户需求，生产非标产品。 Note: we can produce as per your drawings.

NTB-10F, NTB-11F, NTB-12F, NTB-13F, NTB-14F, NTB-15F, NTB-60F

法兰轴套 Flanged Bushes



a:外径倒角 内径 ≥ 0 以上(mm)

T	1.0	1.5	2.0
a	0.5	0.8	1.0

b:内径倒角 内径 ≥ 0 以上(mm)

T	1.0	1.5	2.0
b	C0.5	C0.8	C1.0

※内径 ≥ 0 不到的内外径倒角去毛刺程度即可。

长度 $L \pm 0.25$									内径
7	8	10	12	15	20	25	30	40	ϕd
									5
0607	0608								6
0707									7
	0808	0810	0812						8
		0910							9
1007	1008	1010	1012	1015					10
1207	1208	1210	1212	1215					12
		1310		1315					13
		1410	1412	1415					14
		1510	1512	1515	1520				15
		1610		1615	1620				16
		1810	1812	1815	1820				18
		2010	2012	2015	2020	2025			20
		2210	2212	2215	2220				22
				2415	2420	2425			24
		2510	2512	2515	2520	2525			25
				2615	2620				26
			2812	2815	2820				28
			3012	3015	3020	3025	3030		30
						3125			31
					3220	3225	3230		32
			3512		3520	3525	3530	3540	35
					3820				38
			4012		4020	4025	4030	4040	40
					4520	4525	4530	4540	45
					5020		5030	5040	50
							5530	5540	55
							6030	6040	60

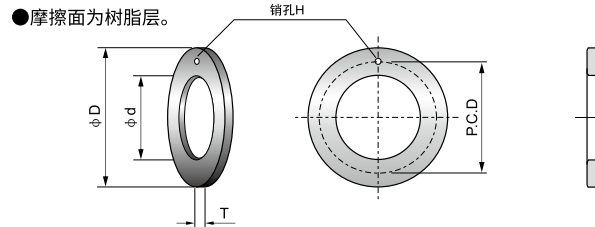
NTB-10W, NTB-11W, NTB-12W, NTB-13W, NTB-14W, NTB-15W, NTB-60W 止推垫圈 Thrust Washers



请从适用的内径、外径、厚度中选择零件号
(例)内径20mm、厚度1.5mm的情况下

NTB-10W - 2015

请指定上述零件号



Parts No.	内径		外径		厚度		销孔	柱销位置	
	∅ d		∅ D		T		H	P.C.D	
NTB-10WC-1015	10	$+0.25$ 0	20	0 -0.25	1.5	0 -0.05	1.10~1.50	15	±0.12
NTB-10WC-1215	12	"	24	"	"	"	1.625~1.875	18	"
NTB-10WC-1415	14	"	26	"	"	"	2.125~2.375	20	"
NTB-10WC-1615	16	"	30	"	"	"	"	22	"
NTB-10WC-1815	18	"	32	"	"	"	"	25	"
NTB-10WC-2015	20	"	36	"	"	"	3.125~3.375	28	"
NTB-10WC-2215	22	"	38	"	"	"	"	30	"
NTB-10WC-2415	24	"	42	"	"	"	"	33	"
NTB-10WC-2615	26	"	44	"	"	"	"	35	"
NTB-10WC-2815	28	"	48	"	"	"	4.125~4.375	38	"
NTB-10WC-3215	32	"	54	"	"	"	"	43	"
NTB-10WC-3815	38	"	62	"	"	"	"	50	"
NTB-10WC-4215	42	"	66	"	"	"	"	54	"
NTB-10WC-4820	48	"	74	"	2.0	"	"	61	"
NTB-10WC-5220	52	"	78	"	"	"	"	65	"
NTB-10WC-6220	62	"	90	"	"	"	"	76	"

注：本公司可以按客户需求，生产非标产品。Note: we can produce as per your drawings.

NTB-20W, NTB-30W 止推垫圈 Thrust Washers

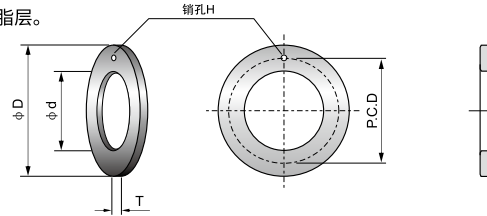


请从适用的内径、外径、厚度中选择零件号
(例)内径20mm、厚度1.5mm的情况下

NTB-20W - 2015

请指定上述零件号

●摩擦面为树脂层。



Parts No.	内径		外径		厚度		销孔	柱销位置	
	∅ d	$\begin{matrix} +0.25 \\ 0 \end{matrix}$	∅ D	$\begin{matrix} 0 \\ -0.25 \end{matrix}$	T	$\begin{matrix} 0 \\ -0.05 \end{matrix}$	H	P.C.D	
NTB-20WC-1015	10		20		1.5		1.10~1.50	15	±0.12
NTB-20WC-1215	12	"	24	"	"	"	1.625~1.875	18	"
NTB-20WC-1415	14	"	26	"	"	"	2.125~2.375	20	"
NTB-20WC-1615	16	"	30	"	"	"	"	22	"
NTB-20WC-1815	18	"	32	"	"	"	"	25	"
NTB-20WC-2015	20	"	36	"	"	"	3.125~3.375	28	"
NTB-20WC-2215	22	"	38	"	"	"	"	30	"
NTB-20WC-2415	24	"	42	"	"	"	"	33	"
NTB-20WC-2615	26	"	44	"	"	"	"	35	"
NTB-20WC-2815	28	"	48	"	"	"	4.125~4.375	38	"
NTB-20WC-3215	32	"	54	"	"	"	"	43	"
NTB-20WC-3815	38	"	62	"	"	"	"	50	"
NTB-20WC-4215	42	"	66	"	"	"	"	54	"
NTB-20WC-4820	48	"	74	"	2.0	"	"	61	"
NTB-20WC-5220	52	"	78	"	"	"	"	65	"
NTB-20WC-6220	62	"	90	"	"	"	"	76	"

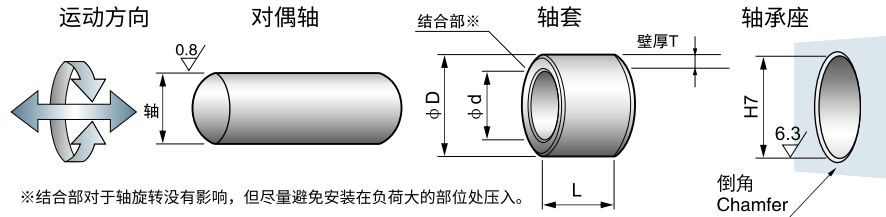
注：本公司可以按客户需求，生产非标产品。Note: we can produce as per your drawings.



请从适用的内径、外径、长度中选择零件号
(例)内径15mm、长度10mm的情况下

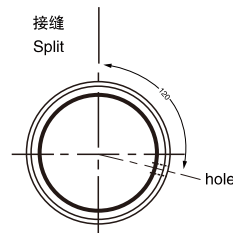
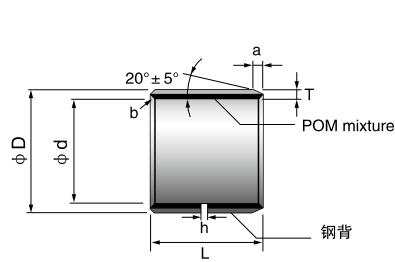
NTB-20 - 1510

请指定上述零件号



轴 shaft		座孔 housing		内径	外径	壁厚	油孔	长度 L ⁰ _{-0.40}					
h8		H7		Ø d	Ø D	T	Øh	10	12	15	20	25	30
10	⁰ _{-0.022}	12	^{+0.018} ₀	10	12	^{0.980} _{0.955}	4	1010	1012	1015	1020		
12	⁰ _{-0.027}	14	"	12	14	"	"	1210	1212	1215	1220	1225	
14	"	16	"	14	16	"	"			1415	1420	1425	
15	"	17	"	15	17	"	"	1510	1512	1515		1525	
16	"	18	"	16	18	"	"			1615	1620	1625	
18	"	20	^{+0.021} ₀	18	20	"	"			1815	1820	1825	
20	⁰ _{-0.033}	23	"	20	23	^{1.475} _{1.445}	"			2015	2020	2025	2030
22	"	25	"	22	25	"	6			2215	2220	2225	2230
24	"	27	"	24	27	"	"			2415	2420	2425	2430
25	"	28	"	25	28	"	"			2515	2520	2525	2530
28	"	32	^{+0.025} ₀	28	32	^{1.970} _{1.935}	"				2820	2825	2830
30	"	34	"	30	34	"	"				3020		3030
32	⁰ _{-0.039}	36	"	32	36	"	"				3220		3230
35	"	39	"	35	39	"	"				3520		3530
36	"	40	"	36	40	"	"						
37	"	41	"	37	41	"	"				3720		
40	"	44	"	40	44	"	8				4020		4030
45	"	50	"	45	50	^{2.460} _{2.415}	"				4520		4530
50	"	55	^{+0.030} ₀	50	55	"	"						
55	⁰ _{-0.046}	60	"	55	60	"	"				5520		
60	"	65	"	60	65	"	"						

注：本公司可以按客户需求，生产非标产品。 Note: we can produce as per your drawings.



a:外径倒角 内径 Ø10以上(mm)

T	1.0	1.5	2.0
a	0.5	0.8	1.0

b:内径倒角 内径 Ø10以上(mm)

T	1.0	1.5	2.0
b	C0.3	C0.5	C0.5

※内径Ø10不到的内外径倒角去除毛刺程度即可。

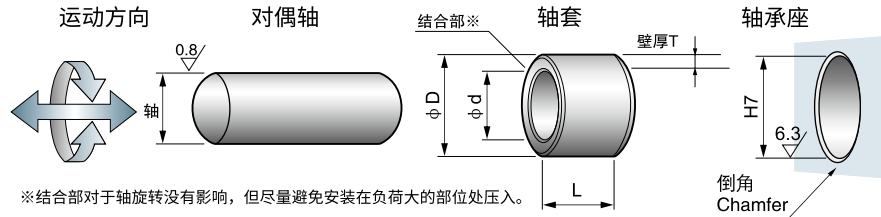
长度 L ⁰ / _{-0.40}									内径
35	40	50	60	70	80	100	110	120	Ød
									10
									12
									14
									15
									16
									18
									20
									22
									24
									25
									28
	3040								30
3235	3240								32
3535		3550							35
									36
									37
	4040	4050							40
	4540	4550							45
	5040	5050	5060						50
	5540	5550	5560						55
	6040		6060	6070					60



请从适用的内径、外径、长度中选择零件号
(例)内径60mm、长度50mm的情况下

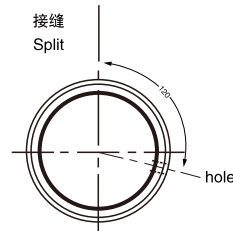
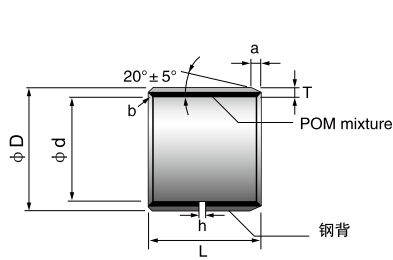
NTB-20 - 6550

请指定上述零件号



轴 shaft		座孔 housing		内径	外径	壁厚	油孔	长度 L $\begin{smallmatrix} 0 \\ -0.40 \end{smallmatrix}$					
h8		H7		ϕd	ϕD	T	ϕh	30	40	50	60	65	70
65	$\begin{smallmatrix} 0 \\ -0.046 \end{smallmatrix}$	70	$\begin{smallmatrix} +0.030 \\ 0 \end{smallmatrix}$	65	70	$\begin{smallmatrix} 2.460 \\ 2.415 \end{smallmatrix}$	8	6530	6540	6550	6060		6570
70	"	75	"	70	75	"	"		7040	7050		7065	7070
75	"	80	"	75	80	"	"		7540		7560		
80	"	85	$\begin{smallmatrix} +0.035 \\ 0 \end{smallmatrix}$	80	85	$\begin{smallmatrix} 2.450 \\ 2.385 \end{smallmatrix}$	9.5				8060		
85	$\begin{smallmatrix} 0 \\ -0.054 \end{smallmatrix}$	90	"	85	90	"	"	8530	8540		8560		
90	"	95	"	90	95	"	"		9040		9060		
95	"	100	"	95	100	"	"				9560		
100	"	105	"	100	105	"	"			10050	10060		
105	"	110	"	105	110	"	"				10560		
110	"	115	"	110	115	"	"				11060		
115	"	120	"	115	120	"	"						11570
120	"	125	$\begin{smallmatrix} +0.040 \\ 0 \end{smallmatrix}$	120	125	"	"				12060		
125	$\begin{smallmatrix} 0 \\ -0.063 \end{smallmatrix}$	130	"	125	130	"	"				12560		
130	"	135	"	130	135	"	"			13050	13060		
135	"	140	"	135	140	"	"			13550	13560		
140	"	145	"	140	145	"	"				14060		
150	"	155	"	150	155	"	"			15050	15060		
160	"	165	"	160	165	"	"			16050	16060		
170	"	175	"	170	175	"	"			17050	17060		
180	"	185	$\begin{smallmatrix} +0.046 \\ 0 \end{smallmatrix}$	180	185	"	"			18050	18060		
190	$\begin{smallmatrix} 0 \\ -0.072 \end{smallmatrix}$	195	"	190	195	"	"			19050	19060		
200	"	205	"	200	205	"	"			20050	20060		
220	"	225	"	220	225	"	"			22050	22060		
240	"	245	"	240	245	"	"			24050	24060		
250	"	255	$\begin{smallmatrix} +0.052 \\ 0 \end{smallmatrix}$	250	255	"	"			25050	25060		
260	$\begin{smallmatrix} 0 \\ -0.081 \end{smallmatrix}$	265	"	260	265	"	"			26050	26060		
280	"	285	"	280	285	"	"			28050	28060		
300	"	305	"	300	305	"	"			30050	30060		

注：本公司可以按客户需求，生产非标产品。 Note: we can produce as per your drawings.



a:外径倒角(mm)

T	2.0	2.5
a	1.0	1.0

b:内径倒角(mm)

T	2.0	2.5
b	C0.5	C0.5

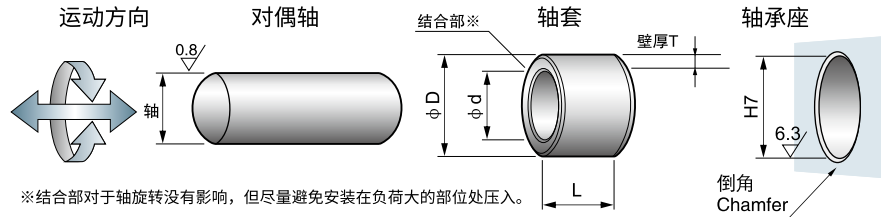
长度 L $\begin{smallmatrix} 0 \\ -0.40 \end{smallmatrix}$							内径
80	90	95	100	110	115	120	ϕ d
							65
7080							70
7580							75
8080				80110			80
8580			85100	85110			85
9080	9090		90100	90110			90
				95110			95
10080		10095			100115		100
					105115		105
				110110	110115		110
							115
			120100	120110			120
			125100	125110			125
13080			130100				130
13580							135
14080			140100				140
15080			150100				150
16080			160100				160
17080			170100				170
18080			180100				180
19080			190100			190120	190
20080			200100			200120	200
22080			220100			220120	220
24080			240100			240120	240
25080			250100			250120	250
26080			260100			260120	260
28080			280100			280120	280
30080			300100			300120	300



请从适用的内径、外径、长度中选择零件号
(例)内径15mm、长度10mm的情况下

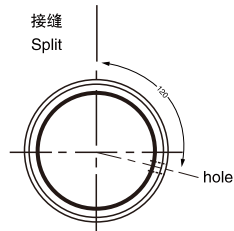
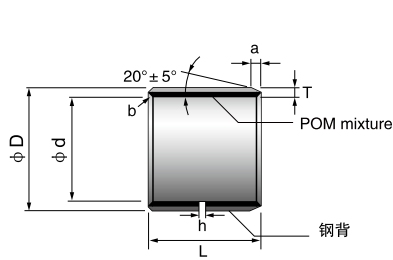
NTB-20 - 1510

请指定上述零件号



轴 shaft		座孔 housing		内径	外径	壁厚	油孔	长度 L ⁰ / _{-0.40}					
h8		H7		Ø d	Ø D	T	Øh	10	12	15	20	25	30
10	⁰ / _{-0.022}	12	^{+0.018} / ₀	10	12	^{0.980} / _{0.955}	4	1010	1012	1015	1020		
12	⁰ / _{-0.027}	14	"	12	14	"	"	1210	1212	1215	1220	1225	
14	"	16	"	14	16	"	"			1415	1420	1425	
15	"	17	"	15	17	"	"	1510	1512	1515		1525	
16	"	18	"	16	18	"	"			1615	1620	1625	
18	"	20	^{+0.021} / ₀	18	20	"	"			1815	1820	1825	
20	⁰ / _{-0.033}	23	"	20	23	^{1.475} / _{1.445}	"			2015	2020	2025	2030
22	"	25	"	22	25	"	6			2215	2220	2225	2230
24	"	27	"	24	27	"	"			2415	2420	2425	2430
25	"	28	"	25	28	"	"			2515	2520	2525	2530
28	"	32	^{+0.025} / ₀	28	32	^{1.970} / _{1.935}	"				2820	2825	2830
30	"	34	"	30	34	"	"				3020		3030
32	⁰ / _{-0.039}	36	"	32	36	"	"				3220		3230
35	"	39	"	35	39	"	"				3520		3530
36	"	40	"	36	40	"	"						
37	"	41	"	37	41	"	"				3720		
40	"	44	"	40	44	"	8				4020		4030
45	"	50	"	45	50	^{2.460} / _{2.415}	"				4520		4530
50	"	55	^{+0.030} / ₀	50	55	"	"						
55	⁰ / _{-0.046}	60	"	55	60	"	"				5520		
60	"	65	"	60	65	"	"						

注：本公司可以按客户需求，生产非标产品。 Note: we can produce as per your drawings.



a:外径倒角 内径 Ø10以上(mm)

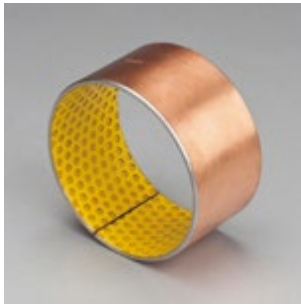
T	1.0	1.5	2.0
a	0.5	0.8	1.0

b:内径倒角 内径 Ø10以上(mm)

T	1.0	1.5	2.0
b	C0.3	C0.5	C0.5

※内径Ø10不到的内外径倒角去除毛刺程度即可。

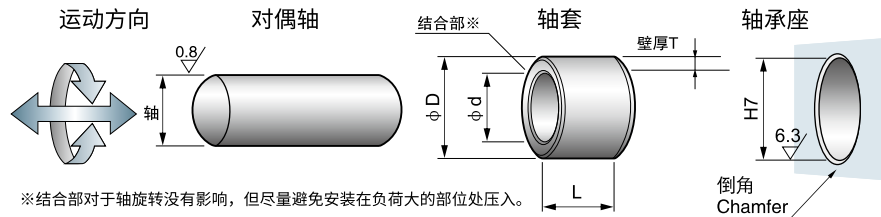
长度 L ⁰ / _{-0.40}									内径
35	40	50	60	70	80	100	110	120	Ø d
									10
									12
									14
									15
									16
									18
									20
									22
									24
									25
									28
	3040								30
3235	3240								32
3535		3550							35
									36
									37
	4040	4050							40
	4540	4550							45
	5040	5050	5060						50
	5540	5550	5560						55
	6040		6060	6070					60



请从适用的内径、外径、长度中选择零件号
(例)内径60mm、长度50mm的情况下

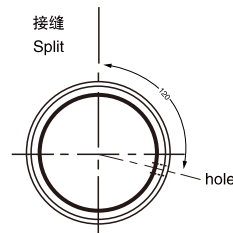
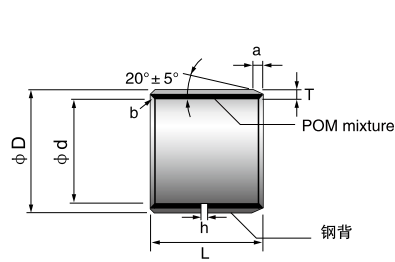
NTB-20 - 6550

请指定上述零件号



轴 shaft	座孔housing	内径	外径	壁厚	油孔	长度 L ⁰ / _{-0.40}						
						h8	H7	∅ d	∅ D	T	∅ h	30
65	70	65	70	2.460 2.415	8	6530	6540	6550	6060			6570
70	75	70	75	"	"		7040	7050			7065	7070
75	80	75	80	"	"		7540				7560	
80	85	80	85	2.450 2.385	9.5						8060	
85	90	85	90	"	"	8530	8540				8560	
90	95	90	95	"	"		9040				9060	
95	100	95	100	"	"						9560	
100	105	100	105	"	"			10050			10060	
105	110	105	110	"	"						10560	
110	115	110	115	"	"						11060	
115	120	115	120	"	"							11570
120	125	120	125	"	"						12060	
125	130	125	130	"	"						12560	
130	135	130	135	"	"			13050			13060	
135	140	135	140	"	"			13550			13560	
140	145	140	145	"	"						14060	
150	155	150	155	"	"				15050		15060	
160	165	160	165	"	"				16050		16060	
170	175	170	175	"	"				17050		17060	
180	185	180	185	"	"				18050		18060	
190	195	190	195	"	"				19050		19060	
200	205	200	205	"	"				20050		20060	
220	225	220	225	"	"				22050		22060	
240	245	240	245	"	"				24050		24060	
250	255	250	255	"	"				25050		25060	
260	265	260	265	"	"				26050		26060	
280	285	280	285	"	"				28050		28060	
300	305	300	305	"	"				30050		30060	

注：本公司可以按客户需求，生产非标产品。 Note: we can produce as per your drawings.



a:外径倒角(mm)

T	2.0	2.5
a	1.0	1.0

b:内径倒角(mm)

T	2.0	2.5
b	C0.5	C0.5

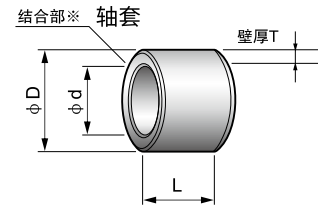
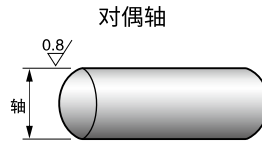
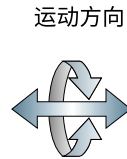
长度 L $\begin{smallmatrix} 0 \\ -0.40 \end{smallmatrix}$							内径
80	90	95	100	110	115	120	Ø d
							65
7080							70
7580							75
8080				80110			80
8580			85100	85110			85
9080	9090		90100	90110			90
				95110			95
10080		10095			100115		100
					105115		105
				110110	110115		110
							115
			120100	120110			120
			125100	125110			125
13080			130100				130
13580							135
14080			140100				140
15080			150100				150
16080			160100				160
17080			170100				170
18080			180100				180
19080			190100			190120	190
20080			200100			200120	200
22080			220100			220120	220
24080			240100			240120	240
25080			250100			250120	250
26080			260100			260120	260
28080			280100			280120	280
30080			300100			300120	300



请从适用的内径、外径、长度中选择零件号
(例)内径25mm、外径33mm、长度20mm的情况下

NTB-40 - 253320

请指定上述零件号

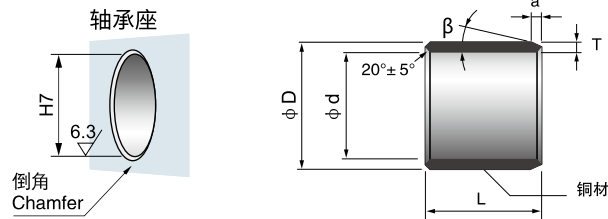


※结合部对于轴旋转没有影响，但尽量避免安装在负荷大的部位处压入。

内径 D _i	外径 D _o	L ⁰ _{-0.40}													
		10	15	20	25	30	35	40	50	60	70	80	90	100	
10	12	1010	1015	1020											
12	14	1210	1215	1220											
14	16	1410	1415	1420	1425										
15	17	1510	1515	1520	1525										
16	18	1610	1615	1620	1625										
18	20	1810	1815	1820	1825										
20	23	2010	2015	2020	2025										
22	25	2210	2215	2220	2225	2230									
24	27		2415	2420	2425	2430									
25	28		2515	2520	2525	2530									
28	31		2815	2820	2825	2830									
30	34		3015	3020	3025	3030	3035	3040							
32	36		3215	3220	3225	3230	3235	3240							
35	39		3515	3520	3525	3530	3535	3540							
40	44			4020	4025	4030	4035	4040	4050						
45	50			4520	4525	4530	4535	4540	4550						
50	55			5020	5025	5030	5035	5040	5050	5060					
55	60			5520	5525	5530	5535	5540	5550	5560					
60	65				6025	6030	6035	6040	6050	6060	6070				
65	70					6530	6535	6540	6550	6560	6570				
70	75					7030	7035	7040	7050	7060	7070	7080			
75	80					7530	7535	7540	7550	7560	7570	7580			
80	85					8030	8035	8040	8050	8060	8070	8080			
85	90					8530	8535	8540	8550	8560	8570	8580	8590		
90	95					9030	9035	9040	9050	9060	9070	9080	9090		
95	100							9540	9550	9560	9570	9580	9590	95100	
100	105								10050	10060	10070	10080	10090	100100	
105	110								10550	10560	10570	10580	10590	105100	
110	115								11050	11060	11070	11080	11090	110100	

注：本公司可以按客户需求，生产非标产品。 Note: we can produce as per your drawings.

NTB-40 轴套 Cylindrical Bushes



内径和外径倒角(mm)

T	a	β
0.75	0.25±0.2	35°±5°
1.00	0.30±0.2	35°±5°
1.50	0.50±0.3	35°±5°

T	a	β
2.00	0.50±0.3	30°±5°
2.50	0.60±0.3	45°±5°

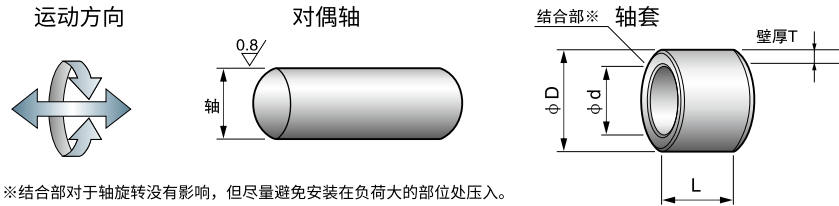
内径 D _i	外径 D _o	L									
		25	30	35	40	50	60	70	80	90	100
115	120					11550	11560	11570	11580	11590	115100
120	125						12060	12070	12080	12090	120100
125	130						12560	12570	12580	12590	125100
130	135						13060	13070	13080	13090	130100
135	140						13560	13570	13580	13590	135100
140	145						14060	14070	14080	14090	140100
145	150						14560	14570	14580	14590	145100
150	155						15060	15070	15080	15090	150100
155	160						15560	15570	15580	15590	155100
160	165						16060	16070	16080	16090	160100
165	170						16560	16570	16580	16590	165100
170	175						17060	17070	17080	17090	170100
175	180						17560	17570	17580	17590	175100
180	185						18060	18070	18080	18090	180100
185	190						18560	18570	18580	18590	185100
190	195						19060	19070	19080	19090	190100
195	200						19560	19570	19580	19590	195100
200	205						20060	20070	20080	20090	200100
205	210						20560	20570	20580	20590	205100
215	220						21560	21570	21580	21590	215100
225	230						22560	22570	22580	22590	225100
230	235						23060	23070	23080	23090	230100
240	245						24060	24070	24080	24090	240100
250	255						25060	25070	25080	25090	250100
260	265						26060	26070	26080	26090	260100
270	275						27060	27070	27080	27090	270100
280	285						28060	28070	28080	28090	280100
290	295						29060	29070	29080	29090	290100
300	305						30060	30070	30080	30090	300100



请从适用的内径、外径、长度中选择零件号
(例)内径25mm、外径33mm、长度20mm的情况下

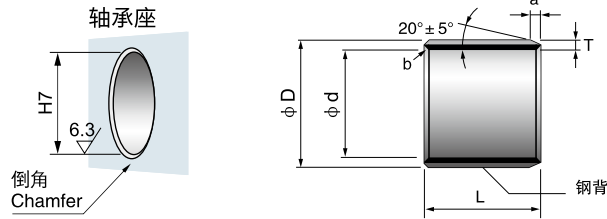
NTB-80 - 253320

请指定上述零件号



∅d	∅D	壁厚 T	外径 ∅D	内径 ∅d	座孔 H7	轴径 f7	f ₁	f ₂	L -0.40							
									10	15	20	25	30	40	50	60
10	12	1 -0.025	12 ^{+0.065} / _{+0.030}	10 ^{+0.022} / _{+0.000}	10 ^{+0.013} / _{+0.000}	12 ^{+0.018}	0.5	0.3	1010	1015	1020					
12	14		14 ^{+0.065} / _{+0.030}	12 ^{+0.027} / _{+0.000}	12 ^{+0.016} / _{-0.034}	14 ^{+0.018}	0.5	0.3	1210	1215	1220					
14	16		16 ^{+0.065} / _{+0.030}	14 ^{+0.027} / _{+0.000}	14 ^{+0.016} / _{-0.034}	16 ^{+0.018}	0.5	0.3	1410	1415	1420					
15	17		17 ^{+0.065} / _{+0.030}	15 ^{+0.027} / _{+0.000}	15 ^{+0.016} / _{-0.034}	17 ^{+0.018}	0.5	0.3	1510	1515	1520					
16	18		18 ^{+0.075} / _{+0.035}	16 ^{+0.027} / _{+0.000}	16 ^{+0.016} / _{-0.034}	18 ^{+0.018}	0.8	0.4	1610	1615	1620					
18	20		20 ^{+0.075} / _{+0.035}	18 ^{+0.033} / _{+0.000}	18 ^{+0.016} / _{-0.034}	20 ^{+0.021}	0.8	0.4	1810	1815	1820	1825				
20	23	1.5 -0.030	23 ^{+0.075} / _{+0.035}	20 ^{+0.033} / _{+0.000}	20 ^{+0.020} / _{-0.041}	23 ^{+0.021}	0.8	0.4	2010	2015	2020	2025				
22	25		25 ^{+0.075} / _{+0.035}	22 ^{+0.033} / _{+0.000}	22 ^{+0.020} / _{-0.041}	25 ^{+0.021}	0.8	0.4	2210	2215	2220	2225				
24	27		27 ^{+0.075} / _{+0.035}	24 ^{+0.033} / _{+0.000}	24 ^{+0.020} / _{-0.041}	27 ^{+0.021}	1.0	0.5	2410	2415	2420		2430			
25	28		28 ^{+0.075} / _{+0.035}	25 ^{+0.033} / _{+0.000}	25 ^{+0.020} / _{-0.041}	28 ^{+0.021}	1.0	0.5		2515	2520	2525	2530			
26	30		30 ^{+0.075} / _{+0.035}	26 ^{+0.033} / _{+0.000}	26 ^{+0.020} / _{-0.041}	30 ^{+0.021}	1.0	0.5		2615	2620	2625	2630			
28	32		32 ^{+0.085} / _{+0.045}	28 ^{+0.033} / _{+0.000}	28 ^{+0.020} / _{-0.041}	32 ^{+0.025}	1.0	0.5		2815	2820	2825	2830	2840		
30	34	2 -0.035	34 ^{+0.085} / _{+0.045}	30 ^{+0.039} / _{+0.000}	30 ^{+0.020} / _{-0.041}	34 ^{+0.025}	1.2	0.6		3015	3020	3025	3030	3040		
32	36		36 ^{+0.085} / _{+0.045}	32 ^{+0.039} / _{+0.000}	32 ^{+0.025} / _{-0.050}	36 ^{+0.025}	1.2	0.6		3215	3220	3225	3230	3240		
35	39		39 ^{+0.085} / _{+0.045}	35 ^{+0.039} / _{+0.000}	35 ^{+0.025} / _{-0.050}	39 ^{+0.025}	1.2	0.6			3520	3525	3530	3540	3550	
38	42		42 ^{+0.085} / _{+0.045}	38 ^{+0.039} / _{+0.000}	38 ^{+0.025} / _{-0.050}	42 ^{+0.025}	1.2	0.6			3825	3825	3830	3840	3850	
40	44		44 ^{+0.085} / _{+0.045}	40 ^{+0.039} / _{+0.000}	40 ^{+0.025} / _{-0.050}	44 ^{+0.025}	1.2	0.6			4020	4025	4030	4040	4050	
45	50		50 ^{+0.085} / _{+0.045}	45 ^{+0.039} / _{+0.000}	45 ^{+0.025} / _{-0.050}	50 ^{+0.025}	1.5	1.0			4520	4525	4530	4540	4550	
50	55	2.5 -0.040	55 ^{+0.100} / _{+0.050}	50 ^{+0.039} / _{+0.000}	50 ^{+0.025} / _{-0.050}	55 ^{+0.030}	1.5	1.0					5030	5040	5050	5060
55	60		60 ^{+0.100} / _{+0.050}	55 ^{+0.046} / _{+0.000}	55 ^{+0.030} / _{-0.060}	60 ^{+0.030}	1.5	1.0					5530	5540	5550	5560
60	65		65 ^{+0.100} / _{+0.050}	60 ^{+0.046} / _{+0.000}	60 ^{+0.030} / _{-0.060}	65 ^{+0.030}	1.5	1.0					6030	6040	6050	6060
65	70		70 ^{+0.100} / _{+0.050}	65 ^{+0.046} / _{+0.000}	65 ^{+0.030} / _{-0.060}	70 ^{+0.030}	1.5	1.0					6530	6540	6550	6560

注：本公司可以按客户需求，生产非标产品。 Note: we can produce as per your drawings.



a: 外径倒角 (mm)

T	2.0	2.5
a	1.0	1.0

b: 内径倒角 (mm)

T	2.0	2.5
b	C0.5	C0.5

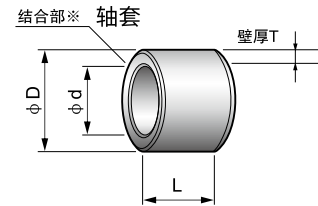
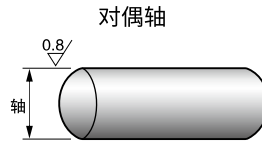
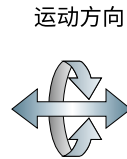
Ød	ØD	壁厚 T	外径 ØD	内径 Ød	座孔 H7	轴径 f7	f ₁	f ₂	L -0.40					
									40	50	60	80	90	100
70	75	2.5 -0.040	75 ^{+0.100} / _{+0.050}	70 ^{+0.046} / _{+0.000}	70 ^{+0.030}	75 ^{-0.030} / _{-0.060}	1.5	1.0	7040	7050	7060	7080		
75	80		80 ^{+0.100} / _{+0.050}	75 ^{+0.046} / _{+0.000}	75 ^{+0.035}	80 ^{-0.030} / _{-0.060}	1.5	1.0	7540	7550	7560			
80	85		85 ^{+0.120} / _{+0.070}	80 ^{+0.054} / _{+0.000}	80 ^{+0.035}	85 ^{-0.030} / _{-0.060}	1.5	1.0	8040	8050	8060	8080		
84	90	3 -0.045	90 ^{+0.120} / _{+0.070}	84 ^{+0.054} / _{+0.000}	90 ^{+0.035}	84 ^{-0.036} / _{-0.071}	1.8	1.2	8440	8450	8460	8480		
89	95		95 ^{+0.120} / _{+0.070}	89 ^{+0.054} / _{+0.000}	95 ^{+0.035}	89 ^{-0.036} / _{-0.071}	1.8	1.2	8940	8950	8960	8980		
94	100		100 ^{+0.120} / _{+0.070}	94 ^{+0.054} / _{+0.000}	100 ^{+0.035}	94 ^{-0.036} / _{-0.071}	1.8	1.2		9450	9460	9480	9490	
99	105		105 ^{+0.120} / _{+0.070}	99 ^{+0.054} / _{+0.000}	105 ^{+0.035}	99 ^{-0.036} / _{-0.071}	1.8	1.2		9950	9960	9980	9990	
104	110		110 ^{+0.120} / _{+0.070}	104 ^{+0.054} / _{+0.000}	110 ^{+0.035}	104 ^{-0.036} / _{-0.071}	1.8	1.2		10450	10460	10480		
109	115		115 ^{+0.120} / _{+0.070}	109 ^{+0.054} / _{+0.000}	115 ^{+0.035}	109 ^{-0.036} / _{-0.071}	1.8	1.2		10950	10960	10980		
114	120		120 ^{+0.120} / _{+0.070}	114 ^{+0.054} / _{+0.000}	120 ^{+0.040}	114 ^{-0.036} / _{-0.083}	1.8	1.2		11450	11460	11480		
119	125	3.5 -0.050	125 ^{+0.170} / _{+0.100}	119 ^{+0.054} / _{+0.000}	125 ^{+0.040}	119 ^{-0.036} / _{-0.083}	1.8	1.2		11950	11960	11980		
123	130		130 ^{+0.170} / _{+0.100}	123 ^{+0.054} / _{+0.000}	130 ^{+0.040}	123 ^{-0.043} / _{-0.083}	2	1.5		12350	12360	12380		123100
128	135		135 ^{+0.170} / _{+0.100}	128 ^{+0.063} / _{+0.000}	135 ^{+0.040}	128 ^{-0.043} / _{-0.083}	2	1.5		12850	12860	12880		128100
133	140		140 ^{+0.170} / _{+0.100}	133 ^{+0.063} / _{+0.000}	140 ^{+0.040}	133 ^{-0.043} / _{-0.083}	2	1.5		13350	13360	13380		133100
138	145		145 ^{+0.170} / _{+0.100}	138 ^{+0.063} / _{+0.000}	145 ^{+0.040}	138 ^{-0.043} / _{-0.083}	2	1.5			13860	13880		138100
143	150		150 ^{+0.170} / _{+0.100}	143 ^{+0.063} / _{+0.000}	150 ^{+0.040}	143 ^{-0.043} / _{-0.083}	2	1.5			14360	14380		143100
148	155		155 ^{+0.170} / _{+0.100}	148 ^{+0.063} / _{+0.000}	155 ^{+0.040}	148 ^{-0.043} / _{-0.083}	2	1.5			14860	14880	14890	
153	160		160 ^{+0.170} / _{+0.100}	153 ^{+0.063} / _{+0.000}	160 ^{+0.040}	153 ^{-0.043} / _{-0.083}	2	1.5			15360	15380	15390	
158	165		165 ^{+0.170} / _{+0.100}	158 ^{+0.063} / _{+0.000}	165 ^{+0.040}	158 ^{-0.043} / _{-0.083}	2	1.5			15860	15880		158100
163	170		170 ^{+0.170} / _{+0.100}	163 ^{+0.063} / _{+0.000}	170 ^{+0.040}	163 ^{-0.043} / _{-0.083}	2	1.5			16360	16380		163100
168	175	175 ^{+0.170} / _{+0.100}	168 ^{+0.063} / _{+0.000}	175 ^{+0.046}	168 ^{-0.043} / _{-0.083}	2	1.5			16860	16880		168100	
173	180	180 ^{+0.170} / _{+0.100}	173 ^{+0.063} / _{+0.000}	180 ^{+0.046}	173 ^{-0.043} / _{-0.083}	2	1.5			17360	17380		173100	



请从适用的内径、外径、长度中选择零件号
(例)内径25mm、外径33mm、长度20mm的情况下

NTB-82 - 253320

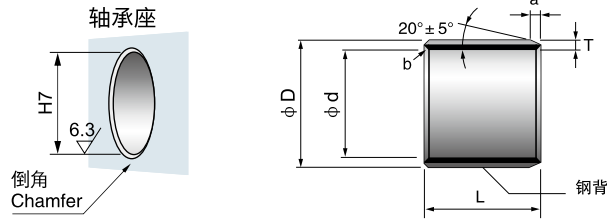
请指定上述零件号



※结合部对于轴旋转没有影响，但尽量避免安装在负荷大的部位处压入。

∅d	∅D	壁厚 T	外径 ∅D	内径 ∅d	座孔 H7	轴径 f7	f ₁	f ₂	L-0.40							
									10	15	20	25	30	40	50	60
10	12	1-0.025	12 +0.065 +0.030	10 +0.022 +0.000	10 +0.013 +0.000	12 +0.018	0.5	0.3	1010	1015	1020					
12	14		14 +0.065 +0.030	12 +0.027 +0.000	12 +0.016 +0.000	14 +0.018	0.5	0.3	1210	1215	1220					
14	16		16 +0.065 +0.030	14 +0.027 +0.000	14 +0.016 +0.000	16 +0.018	0.5	0.3	1410	1415	1420					
15	17		17 +0.065 +0.030	15 +0.027 +0.000	15 +0.016 +0.000	17 +0.018	0.5	0.3	1510	1515	1520					
16	18		18 +0.075 +0.035	16 +0.027 +0.000	16 +0.016 +0.000	18 +0.018	0.8	0.4	1610	1615	1620					
18	20		20 +0.075 +0.035	18 +0.033 +0.000	18 +0.016 +0.000	20 +0.021	0.8	0.4	1810	1815	1820	1825				
20	23	1.5-0.030	23 +0.075 +0.035	20 +0.033 +0.000	20 +0.020 +0.000	23 +0.021	0.8	0.4	2010	2015	2020	2025				
22	25		25 +0.075 +0.035	22 +0.033 +0.000	22 +0.020 +0.000	25 +0.021	0.8	0.4	2210	2215	2220	2225				
24	27		27 +0.075 +0.035	24 +0.033 +0.000	24 +0.020 +0.000	27 +0.021	1.0	0.5	2410	2415	2420		2430			
25	28		28 +0.075 +0.035	25 +0.033 +0.000	25 +0.020 +0.000	28 +0.021	1.0	0.5		2515	2520	2525	2530			
26	30		30 +0.075 +0.035	26 +0.033 +0.000	26 +0.020 +0.000	30 +0.021	1.0	0.5		2615	2620	2625	2630			
28	32		32 +0.085 +0.045	28 +0.033 +0.000	28 +0.020 +0.000	32 +0.025	1.0	0.5		2815	2820	2825	2830	2840		
30	34	2-0.035	34 +0.085 +0.045	30 +0.039 +0.000	30 +0.020 +0.000	34 +0.025	1.2	0.6		3015	3020	3025	3030	3040		
32	36		36 +0.085 +0.045	32 +0.039 +0.000	32 +0.025 +0.000	36 +0.025	1.2	0.6		3215	3220	3225	3230	3240		
35	39		39 +0.085 +0.045	35 +0.039 +0.000	35 +0.025 +0.000	39 +0.025	1.2	0.6			3520	3525	3530	3540	3550	
38	42		42 +0.085 +0.045	38 +0.039 +0.000	38 +0.025 +0.000	42 +0.025	1.2	0.6			3825	3825	3830	3840	3850	
40	44		44 +0.085 +0.045	40 +0.039 +0.000	40 +0.025 +0.000	44 +0.025	1.2	0.6			4020	4025	4030	4040	4050	
45	50		50 +0.085 +0.045	45 +0.039 +0.000	45 +0.025 +0.000	50 +0.025	1.5	1.0			4520	4525	4530	4540	4550	
50	55	2.5-0.040	55 +0.100 +0.050	50 +0.039 +0.000	50 +0.025 +0.000	55 +0.030	1.5	1.0					5030	5040	5050	5060
55	60		60 +0.100 +0.050	55 +0.046 +0.000	55 +0.030 +0.000	60 +0.030	1.5	1.0					5530	5540	5550	5560
60	65		65 +0.100 +0.050	60 +0.046 +0.000	60 +0.030 +0.000	65 +0.030	1.5	1.0					6030	6040	6050	6060
65	70		70 +0.100 +0.050	65 +0.046 +0.000	65 +0.030 +0.000	70 +0.030	1.5	1.0					6530	6540	6550	6560

注：本公司可以按客户需求，生产非标产品。Note: we can produce as per your drawings.



a: 外径倒角 (mm)

T	2.0	2.5
a	1.0	1.0

b: 内径倒角 (mm)

T	2.0	2.5
b	C0.5	C0.5

∅d	∅D	壁厚 T	外径 ∅D	内径 ∅d	座孔 H7	轴径 f7	f ₁	f ₂	L -0.40					
									40	50	60	80	90	100
70	75	2.5 -0.040	75 ^{+0.100} / _{+0.050}	70 ^{+0.046} / _{+0.000}	70 ^{+0.030}	75 ^{-0.030} / _{-0.060}	1.5	1.0	7040	7050	7060	7080		
75	80		80 ^{+0.100} / _{+0.050}	75 ^{+0.046} / _{+0.000}	75 ^{+0.035}	80 ^{-0.030} / _{-0.060}	1.5	1.0	7540	7550	7560			
80	85		85 ^{+0.120} / _{+0.070}	80 ^{+0.054} / _{+0.000}	80 ^{+0.035}	85 ^{-0.030} / _{-0.060}	1.5	1.0	8040	8050	8060	8080		
84	90	3 -0.045	90 ^{+0.120} / _{+0.070}	84 ^{+0.054} / _{+0.000}	90 ^{+0.035}	84 ^{-0.036} / _{-0.071}	1.8	1.2	8440	8450	8460	8480		
89	95		95 ^{+0.120} / _{+0.070}	89 ^{+0.054} / _{+0.000}	95 ^{+0.035}	89 ^{-0.036} / _{-0.071}	1.8	1.2	8940	8950	8960	8980		
94	100		100 ^{+0.120} / _{+0.070}	94 ^{+0.054} / _{+0.000}	100 ^{+0.035}	94 ^{-0.036} / _{-0.071}	1.8	1.2		9450	9460	9480	9490	
99	105		105 ^{+0.120} / _{+0.070}	99 ^{+0.054} / _{+0.000}	105 ^{+0.035}	99 ^{-0.036} / _{-0.071}	1.8	1.2		9950	9960	9980	9990	
104	110		110 ^{+0.120} / _{+0.070}	104 ^{+0.054} / _{+0.000}	110 ^{+0.035}	104 ^{-0.036} / _{-0.071}	1.8	1.2		10450	10460	10480		
109	115		115 ^{+0.120} / _{+0.070}	109 ^{+0.054} / _{+0.000}	115 ^{+0.035}	109 ^{-0.036} / _{-0.071}	1.8	1.2		10950	10960	10980		
114	120		120 ^{+0.120} / _{+0.070}	114 ^{+0.054} / _{+0.000}	120 ^{+0.040}	114 ^{-0.036} / _{-0.083}	1.8	1.2		11450	11460	11480		
119	125		125 ^{+0.170} / _{+0.100}	119 ^{+0.054} / _{+0.000}	125 ^{+0.040}	119 ^{-0.036} / _{-0.083}	1.8	1.2		11950	11960	11980		
123	130		3.5 -0.050	130 ^{+0.170} / _{+0.100}	123 ^{+0.054} / _{+0.000}	130 ^{+0.040}	123 ^{-0.043} / _{-0.083}	2	1.5	12350	12360	12380		123100
128	135			135 ^{+0.170} / _{+0.100}	128 ^{+0.063} / _{+0.000}	135 ^{+0.040}	128 ^{-0.043} / _{-0.083}	2	1.5	12850	12860	12880		128100
133	140	140 ^{+0.170} / _{+0.100}		133 ^{+0.063} / _{+0.000}	140 ^{+0.040}	133 ^{-0.043} / _{-0.083}	2	1.5	13350	13360	13380		133100	
138	145	145 ^{+0.170} / _{+0.100}		138 ^{+0.063} / _{+0.000}	145 ^{+0.040}	138 ^{-0.043} / _{-0.083}	2	1.5		13860	13880		138100	
143	150	150 ^{+0.170} / _{+0.100}		143 ^{+0.063} / _{+0.000}	150 ^{+0.040}	143 ^{-0.043} / _{-0.083}	2	1.5		14360	14380		143100	
148	155	155 ^{+0.170} / _{+0.100}		148 ^{+0.063} / _{+0.000}	155 ^{+0.040}	148 ^{-0.043} / _{-0.083}	2	1.5		14860	14880	14890		
153	160	160 ^{+0.170} / _{+0.100}		153 ^{+0.063} / _{+0.000}	160 ^{+0.040}	153 ^{-0.043} / _{-0.083}	2	1.5		15360	15380	15390		
158	165	165 ^{+0.170} / _{+0.100}		158 ^{+0.063} / _{+0.000}	165 ^{+0.040}	158 ^{-0.043} / _{-0.083}	2	1.5		15860	15880		158100	
163	170	170 ^{+0.170} / _{+0.100}		163 ^{+0.063} / _{+0.000}	170 ^{+0.040}	163 ^{-0.043} / _{-0.083}	2	1.5		16360	16380		163100	
168	175	175 ^{+0.170} / _{+0.100}		168 ^{+0.063} / _{+0.000}	175 ^{+0.046}	168 ^{-0.043} / _{-0.083}	2	1.5		16860	16880		168100	
173	180	180 ^{+0.170} / _{+0.100}		173 ^{+0.063} / _{+0.000}	180 ^{+0.046}	173 ^{-0.043} / _{-0.083}	2	1.5		17360	17380		173100	





NTB-50 固体镶嵌润滑轴承

Solid-lubricant-Embedded Bushes

技术参数 Tech.Data		代号 Grade	NTB-50-1	NTB-50-2
		材料 Material	高力黄铜+石墨 CuZn25Al5Mn4Fe3+Graphite	锡青铜+石墨 ZCuSn5AlPb5Zn5+Graphite
物理机械性能 Physical and mechanical Performance	极限动载荷 (N/mm ²) Dynamic Load		100	60
	摩擦系数 μ Friction Coefficient	脂润滑 Grease Lubrication	0.03	0.03
		油润滑 Oil lubrication	0.16	0.16
	最大线速度 (m/s) Max Sliding Speed		干0.4m/s 油5m/s	2
	最高PV值 N/mm ² ·m/min Max PV Value limit		200	200
	密度 ρ (g/cm ³) Density		8.0	8.0
	抗拉强度 (N/mm ²) Tensile Strength		>750	>780
	延伸率 (%) Elongation		>12	>4
合金硬度 (HB) Alloy Hardness		210~270	80~100	
最高使用温度 °C Max Working Temperature		300	300	
主要运用领域 Typical application		<p>该产品以特殊配方的高力黄铜为基体有很高的力学性能、铸造性能良好、耐蚀性较好，表面按一定的角度和密度镶嵌特殊配方的固体润滑剂，经精密加工而成。产品广泛应用于连铸机、矿山机械、船舶、气轮机等。</p> <p>It is backed with strengthening brass that has good physical performance and good capability for casting. What's more, the brass backing has pret, pretty good anti-erosion ability in air, fresh water and seawater. The surface is regularly and finely machined with sockets in which particular solid lubricant is filled. The product is widely used on consecutive casting and rolling machines, mine-exploiting equipments, ships, steam engine, etc.</p>		<p>该产品以锡青铜为基体，表面按一定的角度和密度镶嵌特殊配方的固体润滑剂，经精密加工而成。产品主要应用于在较高负荷，中等滑动速度下工作的耐磨、耐腐蚀零件，如轻工机械、机床行业、烘炉滚道、壁炉门等。</p> <p>It is backed with tin-bronze. The surface is regularly and finely machined with sockets in which particular solid lubricant is filled. It is mainly applied on the anti-abrasion and anti-erosion parts, which work in conditions with heavier load and mediate running velocity. For instance, on light industrial machines, machine tools, moving belt in the drying machine, door of the fireplace.</p>
可供形式 Availability		 <p>直套 Straight Sets</p> <p>翻边 Flange</p> <p>止推垫片 Thrust Pads</p> <p>滑块 Skateboards</p> <p>非标产品定制 Custom-made Special Products</p>		
公差 Tolerance				
相配座孔公差: H7; 相配轴径公差: f7 Recommend housing tolerance H7 and the shaft as f7				

NTB-50 固体镶嵌润滑轴承

Solid-lubricant-Embedded Bushes

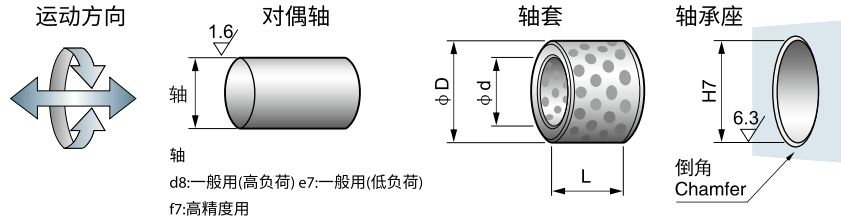
NTB-50-3	NTB-50-4	NTB-50-5	NTB-50-6
钢铜+石墨 钢+CuSn6Zn6Pb3+Graphite	铸铁+石墨 250#Castiron+Graphite	钢+石墨 GCr15+Graphite	高力黄铜+石墨 CuZn25Al5Mn4Fe3+Graphite
70	60	250	100
0.03	0.03	0.03	0.03
0.16	0.16	0.16	0.16
2	0.5	0.1	干0.4m/s 油5m/s
200	40	150	200
7.6	7.5	7.8	8.0
>500	>250	>1500	>750
>10	--	--	>12
60~90	180~230	HRC 58~60	210~270
400	400	300	300
该产品是在钢套的基体内，整体烧结锡青铜粉后嵌入固体润滑剂的固体润滑产品，除具有JDB-2的功能外，还能节省成本，提高抗压强度。 它的端面可以与基体焊接安装使用，因此适用于冶金机械、建筑机械和输油机械等不可以加油的领域。 It is backed with tin-bronze. The surface is regularly and finely machined with sockets in which particular solid lubricant is filled. Products of DYB505 series are mainly used in conditions of light load, high temperature and mediate running velocity. For Instance, on no oil parts on the building, metallurgy and transportation machines.	该产品以铸铁为基体，表面按一定的角度和密度镶嵌特殊配方的固体润滑剂，经精密加工而成。是一种典型的省材产品，能大大降低成本，满足使用要求。产品用于汽车模具及注塑机模架。 It is backed with cast iron. The surface is regularly and finely machined with sockets in which solid lubricant is filled. DYB506 is a typical energy saving product, which could reduce energy consumption cost while meet application requirements. It can be applied to auto molds and frame of the Injection molders.	该产品以钢基镶嵌轴承，是加强型产品，具有较高的抗压性能，在工作时能够排出润滑颗粒，使轴与套之间产生一层隔膜，起到了比单体油润滑更抗咬合的优点，在起重机械的支撑部位特别适用。 例如：卷场机支撑，吊车支撑，但不宜在水中或酸碱场合使用。 It is made of reinforced material-steel Gcr15 with solid lubricant embedded in it. Its good performance of high crash strength can be shown in supporting position of hoisting Machine. e.g. support part of windlass and crane. It can not use in water or in acid/alkali condition.	该产品以特殊配方的高力黄铜为基体有很高的力学性能、铸造性能良好、耐腐蚀性好，表面按一定的角度和密度镶嵌特殊配方的固体润滑剂，经精密加工而成。产品广泛应用于连铸机、矿山机械、船舶、气轮机等。 It is backed with strengthening brass that has good physical performance and good capability for casting. What's more, the brass backing has pret, pretty good anti-erosion ability in air, fresh water and seawater. The surface is regularly and finely machined with sockets in which particular solid lubricant is filled. The product is widely used on consecutive casting and rolling machines, mine-exploiting equipments, ships, steam engine, etc.
			



请从适用的内径、外径、长度中选择零件号
(例)内径25mm、外径33mm、长度20mm的情况下

NTB-50 - 253320

请指定上述零件号

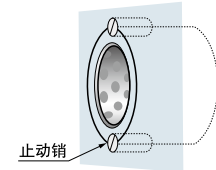
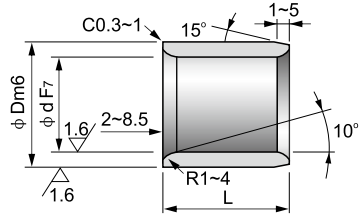


内径		外径		长度 L ^{-0.1} / _{-0.3}							
Ø d		Ø D		8	10	12	15	16	19	20	25
6	+0.022 -0.010	10	+0.015 +0.006	061008	061010	061012					
8	+0.028 +0.013	12	+0.018 +0.007	081208	081210	081212	081215				
10	"	14	"	101408	101410	101412	101415			101420	
12	+0.034 +0.016	18	"	121808	121810	121812	121815	121816	121819	121820	121825
13	"	19	+0.021 +0.008		131910	131912	131915			131920	131925
14	"	20	"		142010	142012	142015			142020	142025
15	"	21	"		152110	152112	152115	152116		152120	152125
16	"	22	"		162210	162212	162215	162216	162219	162220	162225
17	"	23	"				172315				
18	"	24	"		182410	182412	182415	182416		182420	182425
19	-0.041 -0.020	26	"				192615			192620	
20	"	28	"		202810	202812	202815	202816	202819	202820	202825
"	"	30	"		203010	203012	203015	203016		203020	203025
22	"	32	+0.025 +0.009			223212	223215			223220	223225
25	"	33	"			253312	253315	253316		253320	253325
"	"	35	"			253512	253515	253516		253520	253525
28	"	38	"							283820	283825
30	"	"	"			303812	303815			303820	303825
"	"	40	"			304012	304015			304020	304025
31.5	+0.050 +0.025	"	"								
32	"	42	"							324220	
35	"	44	"							354420	354425
"	"	45	"							354520	354525
38	"	48	"								
40	"	50	"				405015			405020	405025
"	"	55	+0.030 +0.011				405515				
45	"	"	"								
"	"	56	"								
"	"	60	"								

注：本公司可以按客户需求，生产非标产品。 Note: we can produce as per your drawings.

为了防止脱落。推荐使用止动销

- 能在旋转、摇动以及往复运动中使用。
- 不能在海水中使用。
- 内径31.5mm-63mm的轴套能适用于油压气缸中间轴套颈套上。



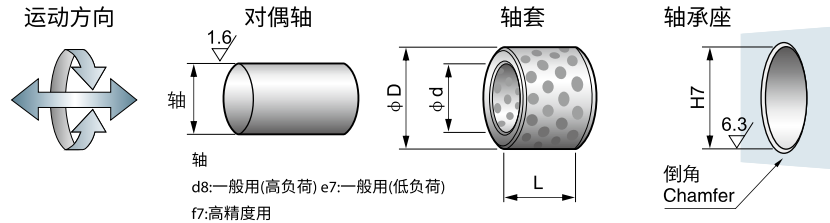
长度 L ^{-0.1} / _{-0.3}							压入后 内径公差	适用垫圈 SPW	内径 Ød
30	35	40	50	60	70	80			
							+0.019	0603	6
							+0.007	0803	8
							+0.025	1003	10
							+0.010	1203	12
121830							+0.031	1303	13
131930							+0.013	1403	14
142030							+0.030	1503	15
152130	152135	152140					+0.012	1603	16
162230	162235	162240					"	1803*	17
182430	182435	182440					"	1803	18
							+0.037	2005*	19
202830	202835	202840	202850				+0.016	2005	20
203030	203035	203040	203050				"	2505*	"
							"	"	22
253330	253335	253340	253350	253360			"	2505	25
253530	253535	253540	253550	253560			"	3005*	"
283830		283840					"	"	28
303830	303835	303840	303850	303860			"	3005	30
304030	304035	304040	304050	304060			"	3505*	"
314030		314040					+0.046	"	31.5
324230		324240					+0.021	"	32
354430	354435	354440	354450	354460			"	3505	35
354530	354535	354540	354550	354560			"	4007*	"
		384840					"	"	38
405030	405035	405040	405050	405060	405070	405080	"	4007	40
405530	405535	405540	405550	405560			+0.045	4507*	"
455530	455535	455540	455550	455560			+0.020	4507	45
455630	455635	455640	455650	455660			"	"	"
456030	456035	456040	456050	456060	456070	456080	"	"	"



请从适用的内径、外径、长度中选择零件号
(例)内径80mm、外径96mm、长度70mm的情况下

NTB-50 - 809670

请指定上述零件号

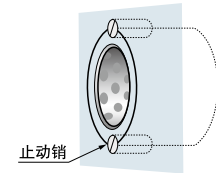
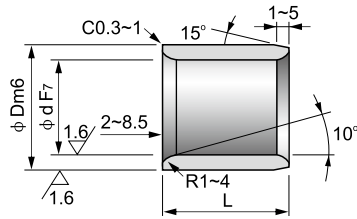


内径		外径		长度 L ^{-0.1} / _{-0.3}							
Ø d		Ø D		20	30	35	40	50	60	70	80
50	+0.050 +0.025	60	+0.030 +0.011	506020	506030	506035	506040	506050	506060	506070	506080
"	"	62	"		506230	506235	506240	506250	506260	506270	506280
"	"	65	"		506530		506540	506550	506560	506570	506580
55	+0.060 +0.030	70	"		557030	557035	557040	557050	557060	557070	
60	"	74	"		607430	607435	607440	607450	607460	607470	607480
"	"	75	"		607530	607535	607540	607550	607560	607570	607580
63	"	"	"						637560	637570	637580
65	"	80	"				658040	658050	658060	658070	658080
70	"	85	+0.035 +0.013		708530	708535	708540	708550	708560	708570	708580
"	"	90	"					709050	709060	709070	709080
75	"	"	"					759050	759060	759070	759080
"	"	95	"						759560	759570	759580
80	"	96	"				809640	809650	809660	809670	809680
"	"	100	"				8010040	8010050	8010060	8010070	8010080
85	+0.071 +0.036	"	"						8510060		8510080
90	"	110	"					9011050	9011060		9011080
100	"	120	"					10012050	10012060	10012070	10012080
110	"	130	+0.040 +0.015					11013050		11013070	11013080
120	"	140	"							12014070	12014080
125	+0.083 +0.043	145	"								
130	"	150	"								13015080
140	"	160	"								
150	"	170	"								15017080
160	"	180	"								16018080
170	"	190	+0.046 +0.017								
180	"	200	"								
190	+0.096 +0.050	210	"								
200	"	230	"								

注：本公司可以按客户需求，生产非标产品。 Note: we can produce as per your drawings.

为了防止脱落。推荐使用止动销

- 能在旋转、摇动以及往复运动中使用。
- 不能在海水中使用。
- 内径31.5mm-63mm的轴套能适用于油压气缸中间轴套颈套上。



长度 L ^{-0.1} / _{-0.3}							压入后 内径公差	适用垫圈 SPW	内径 Ø d
90	100	120	130	140	150	200			
							+0.045 +0.020	5008	50
							"	"	"
	5065100						"	"	"
							+0.055 +0.025	5508	55
							"	6008	60
	6075100						"	"	"
							"	6508	63
							"	6508	65
	7085100						+0.054 +0.024	7010	70
							"	"	"
	7590100						"	7510	75
	7595100						"	"	"
	8096100	8096120					"	8010	80
	80100100	80100120		80100140			"	"	"
							+0.065 +0.030	9010	85
9011090	90110100	90110120					"	9010	90
10012090	100120100	100120120		100120140			"	10010	100
	110130100	110130120					+0.064 +0.029	12010	110
12014090	120140100	120140120		120140140			"	12010	120
	125145100	125145120					+0.076 +0.036	-	125
	130150100		130150130				"	"	130
	140160100			140160140			"	"	140
	150170100				150170150		"	"	150
	160180100				160180150		"	"	160
	170190100				170190150		"	"	170
	180200100				180200150		"	"	180
	190210100				190210150		+0.088 +0.042	"	190
					200230150	200230200	"	"	200

※压入后内径公差为参考值。

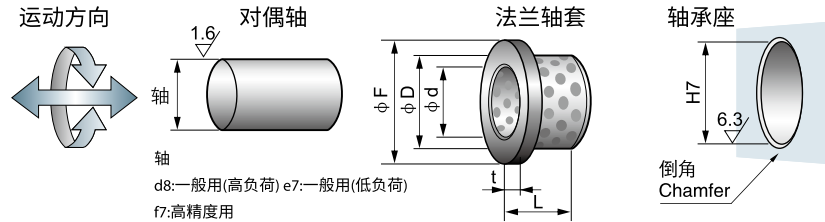
NTB-50F 法兰轴套 Flanged Bushes



请从适用的内径、外径、长度中选择零件号
(例)内径50mm、长度30mm的情况下

NTB-50F - 5030

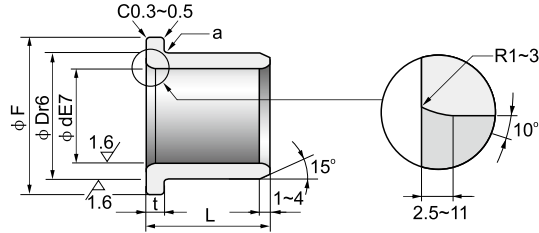
请指定上述零件号



内径		外径		法兰			长度 L ^{-0.1} / _{-0.3}						
∅ d		∅ D		∅ F	t	10	12	15	17	18	20	23	25
6	+0.032 +0.020	10	+0.028 +0.019	16	2	0 -0.1	0610	0612					
8	+0.040 +0.025	12	+0.034 +0.023	20	"	"	0810	0812	0815				
10	"	14	"	22	"	"	1010	1012	1015	1017	1020		
12	+0.050 +0.032	18	"	25	3	"	1210	1212	1215		1220		1225
13	"	19	+0.041 +0.028	26	"	"	1310	1312	1315		1320		1325
14	"	20	"	27	"	"			1415		1420		1425
15	"	21	"	28	"	"	1510	1512	1515		1520		1525
16	"	22	"	29	"	"		1612	1615	1618	1620	1623	1625
18	"	24	"	32	"	"			1815		1820		1825
20	+0.061 +0.040	30	"	40	5	"			2015		2020		2025
25	"	35	+0.050 +0.034	45	"	"			2515		2520		2525
30	"	40	"	50	"	"					3020		3025
31.5	+0.075 +0.050	"	"	"	"	"					3120		
35	"	45	"	60	"	"					3520		3525
40	"	50	"	65	"	"					4020		4025
45	"	55	+0.060 +0.041	70	"	"							
50	"	60	"	75	"	"							
55	+0.090 +0.060	65	"	80	"	"							
60	"	75	+0.062 +0.043	90	7.5	"							
63	"	"	"	85	"	"							
65	"	80	"	95	"	"							
70	"	85	+0.073 +0.051	105	"	"							
75	"	90	"	110	"	"							
80	"	100	"	120	10	"							
90	+0.107 +0.072	110	+0.076 +0.054	130	"	"							
100	"	120	"	150	"	"							
120	"	140	+0.088 +0.063	170	"	"							
130	+0.125 +0.085	150	+0.090 +0.065	180	"	"							
140	"	160	"	190	"	"							
150	"	170	+0.093 +0.068	200	"	"							
160	"	180	"	210	"	"							

注：本公司可以按客户需求，生产非标产品。 Note: we can produce as per your drawings.

NTB-50F 法兰轴套 Flanged Bushes



a:凸缘下端倒角(mm)
Chamfered at the lower end

d	~1.6	~55	~160
a	R0.3	R0.5	R1

- 能使用与旋转，摇动运动以及往复运动。
- 在法兰部分由于没有镶嵌润滑剂，不能承受轴向负重。
- 请避免在海水中使用。
- 内径31.5mm-63mm是油压气缸中间轴套上使用产品。

长度 L $^{+0.1}_{-0.3}$								压入后 内径公差	内径 ϕd
30	35	40	50	60	67.5	80	100		
								+0.016 +0.004	6
								+0.021 +0.006	8
								-	10
1230								+0.031 +0.013	12
1330								+0.026 +0.008	13
								-	14
1530								-	15
1630	1635	1640						-	16
1830	1835	1840						-	18
2030	2035	2040						+0.037 +0.016	20
2530	2535	2540	2550					+0.032 +0.011	25
3030	3035	3040	3050					-	30
3130	3135	3140						+0.046 +0.021	31.5
3530	3535	3540	3550					-	35
4030	4035	4040	4050					-	40
4530	4535	4540	4550	4560				+0.040 +0.015	45
5030	5035	5040	5050	5060				-	50
		5540		5560				+0.055 +0.025	55
		6040	6050	6060		6080		+0.053 +0.023	60
					6367			-	63
				6560				-	65
			7050			7080		+0.046 +0.016	70
				7560				-	75
				8060		8080	80100	-	80
				9060		9080		+0.060 +0.025	90
						10080	100100	-	100
						12080	120100	+0.052 +0.017	120
						13080	130100	+0.068 +0.028	130
						14080	140100	-	140
							150100	+0.065 +0.025	150
							160100	-	160

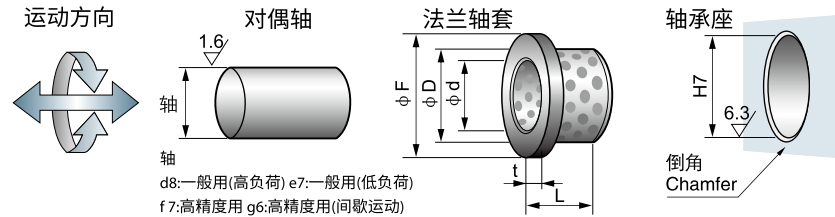
NTB-50FG 法兰轴套 Flanged Bushes



请从适用的内径、外径、长度中选择零件号
(例)内径50mm、长度30mm的情况下

NTB-50FG- 5030

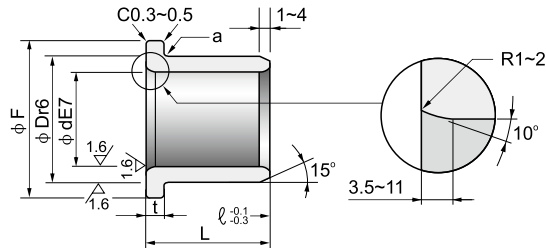
请指定上述零件号



内径		外径		法兰				长度 L					
d∅	公差	D∅	公差	F∅	公差	t	公差	11	13	18	20	23	25
6	+0.032 +0.020	10	+0.028 +0.019	20	0 -0.3	3	0 -0.1	0611					
8	+0.040 +0.025	12	+0.034 +0.023	25	"	"	"		0813				
10	"	14	"	"	"	"	"		1013	1018			
12	+0.050 +0.032	18	"	30	"	3	"	1211		1218		1223	
13	"	19	+0.041 +0.028	"	"	"	"		1313	1318		1323	
15	"	21	"	35	"	"	"		1513	1518		1523	
16	"	22	"	"	"	"	"		1613	1618		1623	
18	"	24	"	40	"	"	"			1818		1823	
20	+0.061 +0.040	28	"	45	"	5	"				2020		2025
25	"	33	+0.050 +0.034	50	"	"	"				2520		2525
30	"	38	"	55	"	"	"				3020		3025
35	+0.075 +0.050	44	"	65	"	"	"				3520		3525
40	"	50	"	70	"	7	"						
50	"	62	+0.060 +0.041	90	"	8	0 -0.04						
60	+0.090 +0.060	74	+0.062 +0.043	110	"	"	"						
70	"	85	+0.073 +0.051	120	"	10	"						
80	"	96	"	140	"	"	"						

注：本公司可以按客户需求，生产非标产品。Note: we can produce as per your drawings.

NTB-50FG 法兰轴套 Flanged Bushes



- 能在旋转，摇动以及往复运动中使用。
- 同一个轴套能用时承受径向与轴向负荷。
- 法兰厚度的高精度化能使机械精度提高。

a:凸缘下端倒角(mm)
Chamfered at the lower end

d	~50	60~
a	R0.5	R1

长度 L												压入后 内径公差	内径 ∅d	
27	35	37	38	47	48	50	58	60	68	80	90			
													+0.016 +0.004	6
													+0.021 +0.006	8
													"	10
													+0.031 +0.013	12
													+0.026 +0.008	13
													"	15
													"	16
													"	18
													+0.037 +0.016	20
													+0.032 +0.011	25
	3035												"	30
	3535												+0.046 +0.021	35
4027		4037		4047									"	40
			5038		5048		5058						+0.040 +0.015	50
			6038		6048		6058		6068				+0.053 +0.023	60
						7050				7080			+0.046 +0.016	70
								8060			8090		"	80

※压入后内径公差为参考值。

NTB-50W

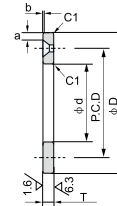
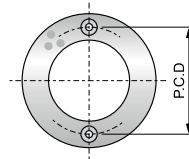
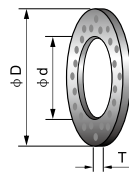
法兰轴套 Flanged Bushes



请从适用的内径、外径、长度中选择零件号
(例)内径30.2mm、厚度5mm的情况下

NTB-50W - 3005

请指定上述零件号



a b: 端面倒角 (mm)

d	a	b
~10.2	1.5	0.3
~18.2	2	0.4
~35.2	2.5	0.4
~45.2	3	0.5
~55.3	4	0.6
~100.5	5	0.8
~120.5	4	0.8

●能与OOB-50组合使用。

Parts No.	内径		外径 ∅ D	厚度		P.C.D	定位孔	
	∅ d			T			个数	定位螺栓
NTB-50W-0603	6.2	^{+0.2} / _{+0.1}	25	3	⁰ / _{-0.1}	15	2	M3
NTB-50W-0803	8.2	"	28	"	"	18	"	"
NTB-50W-1003	10.2	"	30	"	"	20	"	"
NTB-50W-1203	12.2	"	40	"	"	28	"	"
NTB-50W-1203N	"	"	"	"	"		无定位孔	
NTB-50W-1303	13.2	"	"	"	"	28	2	M3
NTB-50W-1403	14.2	"	"	"	"	"	"	"
NTB-50W-1503	15.2	"	50	"	"	35	"	"
NTB-50W-1603	16.2	"	"	"	"	"	"	"
NTB-50W-1603N	"	"	"	"	"		无定位孔	
NTB-50W-1803	18.2	"	"	"	"	35	2	M3
NTB-50W-2005	20.2	"	"	5	"	"	"	M5
NTB-50W-2505	25.2	"	55	"	"	40	"	"
NTB-50W-2505N	"	"	"	"	"		无定位孔	
NTB-50W-3005	30.2	"	60	"	"	45	2	M5
NTB-50W-3005N	"	"	"	"	"		无定位孔	
NTB-50W-3505	35.2	"	70	"	"	50	2	M5
NTB-50W-4007	40.2	^{+0.2} / _{+0.1}	80	7	⁰ / _{-0.1}	60	2	M6
NTB-50W-4507	45.2	"	90	"	"	70	"	"
NTB-50W-5008	50.3	^{+0.3} / _{+0.1}	100	8	"	75	4	"
NTB-50W-5508	55.3	"	110	"	"	85	"	"
NTB-50W-6008	60.3	"	120	"	"	90	"	M8
NTB-50W-6508	65.3	"	125	"	"	95	"	"
NTB-50W-7010	70.3	"	130	10	"	100	"	"
NTB-50W-7510	75.3	"	140	"	"	110	"	"
NTB-50W-8010	80.3	"	150	"	"	120	"	"
NTB-50W-9010	90.5	"	170	"	"	140	"	M10
NTB-50W-10010	100.5	"	190	"	"	160	"	"
NTB-50W-12010	120.5	"	200	"	"	175	"	"

注：本公司可以按客户需求，生产非标产品。 Note: we can produce as per your drawings.

NTB-50SW

滑块 Wear Plate-20mm Thick



●运动方向为纵横两方向

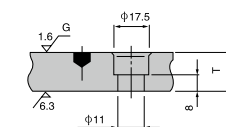
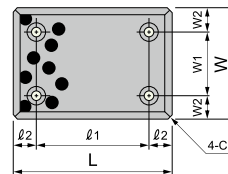
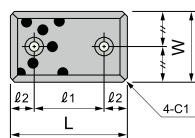
运动方向



请从适用的长度、宽度、厚度中选择零件号
(例)内径25mm、外径33mm、长度20mm的情况下

NTB-50SW - 75200

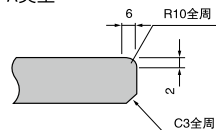
请指定上述零件号



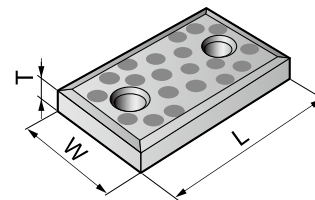
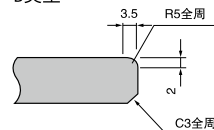
断面形状

倒角形状

A类型



B类型



Parts No.	宽		长度		厚度		定位孔间隙						定位孔 个数	倒角 形状
	W		L		T		W ₁	W ₂	l ₁	l ₂				
NTB-50SW-4875	48	^{-0.1} / _{-0.3}	75	^{-0.1} / _{-0.3}	20	±0.025	-	±0.2	-	45	±0.2	15	2	B
NTB-50SW-48100	"	"	100	"	"	"	"	"	"	50	"	25	"	"
NTB-50SW-48125	"	"	125	"	"	"	"	"	"	75	"	"	"	"
NTB-50SW-48150	"	"	150	"	"	"	"	"	"	100	"	"	"	"
NTB-50SW-7575B	75	"	75	"	"	"	"	"	"	25	"	"	"	A
NTB-50SW-75100B	"	"	100	"	"	"	"	"	"	50	"	"	"	"
NTB-50SW-75125	"	"	125	"	"	"	"	"	"	75	"	"	"	"
NTB-50SW-75150	"	"	150	"	"	"	"	"	"	100	"	"	"	"
NTB-50SW-75200	"	"	200	"	"	"	"	"	"	150	"	"	"	"
NTB-50SW-100100	100	"	100	"	"	"	50	"	25	50	"	"	4	"
NTB-50SW-100125	"	"	125	"	"	"	"	"	"	75	"	"	"	"
NTB-50SW-100150	"	"	150	"	"	"	"	"	"	100	"	"	"	"
NTB-50SW-100200	"	"	200	"	"	"	"	"	"	150	"	"	"	"
NTB-50SW-100250	"	"	250	"	"	"	"	"	"	200	"	"	"	"
NTB-50SW-125150	125	"	150	"	"	"	"	"	37.5	100	"	"	"	"
NTB-50SW-125200	"	"	200	"	"	"	"	"	"	150	"	"	"	"
NTB-50SW-125250	"	"	250	"	"	"	"	"	"	200	"	"	"	"
NTB-50SW-150150	150	"	150	"	"	"	100	"	25	100	"	"	"	"
NTB-50SW-150200	"	"	200	"	"	"	"	"	"	150	"	"	"	"
NTB-50SW-150250	"	"	250	"	"	"	"	"	"	200	"	"	"	"

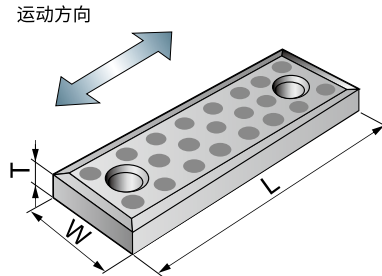
NTB-50SW

滑块 Wear Plate-10mm Thick



●运动方向为长度方向

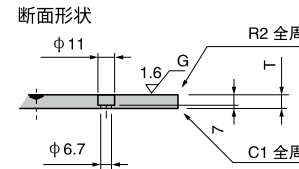
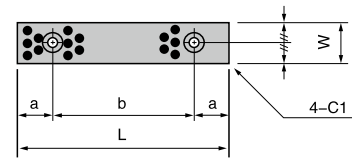
请从适用的长度、宽度、厚度中选择零件号
(例)宽28mm、长度150mm的情况下



NTB-50SW - 28150

请指定上述零件号

W=18、28、38、48



Parts No.	宽		长度		厚度		定位孔间隙		定位螺栓	
	W	L	T		a	b	种类	个数		
NTB-50SW-1875	18	75	10	+0.04 +0.01	15	45	M6 内六角螺栓	2		
NTB-50SW-18100	"	100	"	"	25	50	"	"		
NTB-50SW-18125	"	125	"	"	"	75	"	"		
NTB-50SW-18150	"	150	"	"	"	100	"	"		
NTB-50SW-2875	28	75	"	"	15	45	"	"		
NTB-50SW-28100	"	100	"	"	25	50	"	"		
NTB-50SW-28125	"	125	"	"	"	75	"	"		
NTB-50SW-28150	"	150	"	"	"	100	"	"		
NTB-50SW-3875	38	75	"	"	15	45	"	"		
NTB-50SW-38100	"	100	"	"	25	50	"	"		
NTB-50SW-38125	"	125	"	"	"	75	"	"		
NTB-50SW-38150	"	150	"	"	"	100	"	"		
NTB-50SW-4875	48	75	"	"	15	45	"	"		
NTB-50SW-48100	"	100	"	"	25	50	"	"		
NTB-50SW-48125	"	125	"	"	"	75	"	"		
NTB-50SW-48150	"	150	"	"	"	100	"	"		

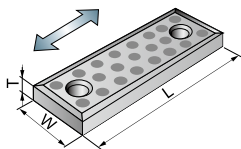
注：本公司可以按客户需求，生产非标产品。Note: we can produce as per your drawings.

NTB-50SW

滑块 Wear Plate-5mm Thick



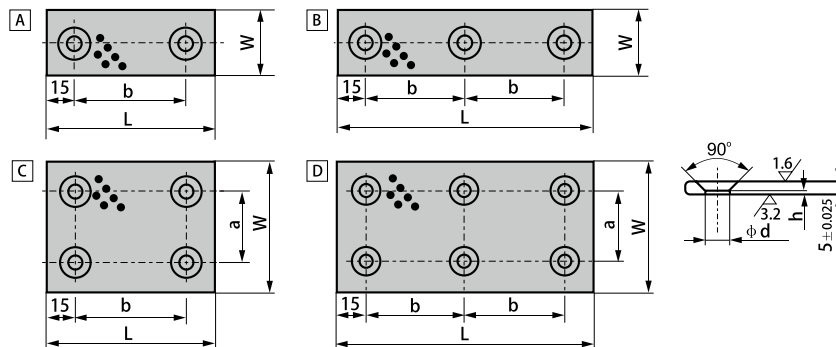
●运动方向为长度方向 运动方向



请从适用的长度、宽度、厚度中选择零件号
(例)宽28mm、长度150mm的情况下

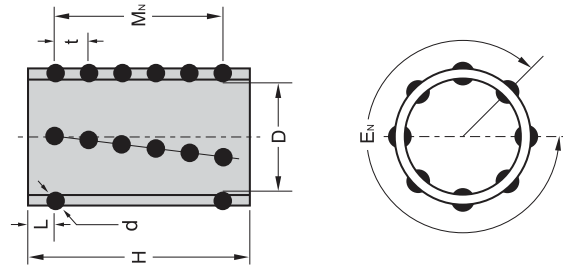
NTB-50SW - 28150

请指定上述零件号



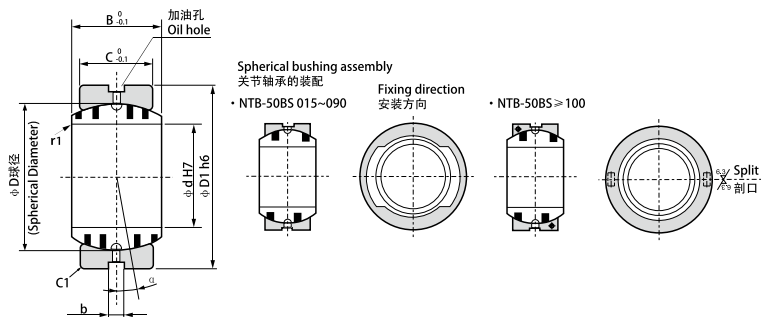
Parts No.	W	d	h	L	a	b	Sketch 图示
NTB-50SW-1850	18	6.5	1.5	50	-	20	A
NTB-50SW-1875	"	"	"	75	-	45	"
NTB-50SW-18100	"	"	"	100	-	70	"
NTB-50SW-18150	"	"	"	150	-	60	B
NTB-50SW-2850	28	10	0.8	50	-	20	A
NTB-50SW-2875	"	"	"	75	-	45	"
NTB-50SW-28100	"	"	"	100	-	70	"
NTB-50SW-28150	"	"	"	150	-	60	B
NTB-50SW-3850	38	"	"	50	-	20	A
NTB-50SW-3875	"	"	"	75	-	45	"
NTB-50SW-38100	"	"	"	100	-	70	"
NTB-50SW-38150	"	"	"	150	-	60	B
NTB-50SW-4875	48	"	"	75	-	45	A
NTB-50SW-48100	"	"	"	100	-	70	"
NTB-50SW-48125	"	"	"	125	-	95	"
NTB-50SW-48150	"	"	"	150	-	60	B
NTB-50SW-7575	75	"	"	75	45	45	C
NTB-50SW-75100	"	"	"	100	"	70	"
NTB-50SW-75125	"	"	"	125	"	95	"
NTB-50SW-75150	"	"	"	150	"	60	D
NTB-50SW-100100	100	"	"	100	75	70	C
NTB-50SW-100125	"	"	"	125	"	95	"
NTB-50SW-100150	"	"	"	150	"	60	D

注：本公司可以按客户需求，生产非标产品。 Note: we can produce as per your drawings.



型号规格 Designation	D	H	d	E_N	M_N	球 BALLS	t	L
NTB-100-1950	19	50	3	12	8	96	5.5	5.75
NTB-100-1960		60			10	120		5.25
NTB-100-2050		20			50	8		96
NTB-100-2060	60				10	120		5.25
NTB-100-2250	22				50	8		112
NTB-100-2260		60			10	140		5.25
NTB-100-2360		60		10	208	5.25		
NTB-100-2475	24	75		16	13	128		4.50
NTB-100-2550	25	50			8	112		5.75
NTB-100-2560		60			10	160		5.25
NTB-100-2575		75			13	208		4.50
NTB-100-2775	27	75			13	208		4.50
NTB-100-2860	28	60	4		14	8	112	7.25
NTB-100-2875		75		11		154	5.00	
NTB-100-3060		30		60		8	112	7.25
NTB-100-3075	75			11		154	5.00	
NTB-100-3260	32			60		8	128	7.25
NTB-100-3275		75		11		192	5.00	
NTB-100-3390		90		13	208	6.00		
NTB-100-3685	36	85		16	12	192	6.75	
NTB-100-3690		90			13	208	6.00	
NTB-100-3870		38			70	8	128	7.00
NTB-100-3890	90				11	176	5.00	
NTB-100-4090	90				11	176	5.00	
NTB-100-4590	45	90	18		11	198	5.00	
NTB-100-45110		110		13	234	7.00		
NTB-100-5090		50		90	11	220	5.00	
NTB-100-50110	110			13	260	7.00		
NTB-100-6090	60			90	11	242	5.00	
NTB-100-60110		110		13	286	7.00		
NTB-100-80130		80	130	28	15	420	9.00	

注：本公司可以按客户需求，生产非标产品。 Note: we can produce as per your drawings.



产品代号 Part No.	d H7	D1 h6	B	C	D	b	调整角度Alignment Angle α°	径向承载Allowable Radial Load (kN)	径向承载Allowable Thrust Load (kN)
NTB-50BS-015	15 $\begin{smallmatrix} +0.018 \\ 0 \end{smallmatrix}$	26 $\begin{smallmatrix} 0 \\ -0.013 \end{smallmatrix}$	12	9	22	4	8	6.5	0.5
NTB-50BS-020	20 $\begin{smallmatrix} +0.021 \\ 0 \end{smallmatrix}$	32 $\begin{smallmatrix} 0 \\ -0.016 \end{smallmatrix}$	16	14	28	"	4	12.6	1.4
NTB-50BS-025	25 "	42 "	21	18	36	"	5	21.8	2.5
NTB-50BS-030	30 "	50 "	27	23	44	"	6	32.0	3.5
NTB-50BS-035	35 $\begin{smallmatrix} +0.025 \\ 0 \end{smallmatrix}$	55 $\begin{smallmatrix} 0 \\ -0.019 \end{smallmatrix}$	30	26	49	"	5	43.7	4.8
NTB-50BS-040	40 "	62 "	33	28	55	"	6	54.7	5.7
NTB-50BS-045	45 "	72 "	36	31	62	"	5	69.7	7.2
NTB-50BS-050	50 "	80 "	42	36	70	"	"	92.4	10
NTB-50BS-060	60 $\begin{smallmatrix} +0.030 \\ 0 \end{smallmatrix}$	100 $\begin{smallmatrix} 0 \\ -0.022 \end{smallmatrix}$	53	45	90	"	6	143	16
NTB-50BS-070	70 "	110 "	58	50	99	"	5	181	20
NTB-50BS-080	80 "	130 "	70	60	115	"	6	254	30
NTB-50BS-090	90 $\begin{smallmatrix} +0.035 \\ 0 \end{smallmatrix}$	140 $\begin{smallmatrix} 0 \\ -0.025 \end{smallmatrix}$	76	65	125	"	"	313	36
NTB-50BS-100	100 "	160 "	88	75	145	6	"	544	64
NTB-50BS-110	110 "	170 "	93	80	155	"	5	642	73
NTB-50BS-120	120 "	190 $\begin{smallmatrix} 0 \\ -0.029 \end{smallmatrix}$	105	90	17	"	6	797	94
NTB-50BS-130	130 $\begin{smallmatrix} +0.040 \\ 0 \end{smallmatrix}$	200 "	110	95	180	"	5	880	105
NTB-50BS-140	140 "	210 "	90	70	"	"	7	668	56
NTB-50BS-150	150 "	220 "	120	105	200	"	5	1135	129
NTB-50BS-160	160 "	230 "	105	80	"	"	8	891	73
NTB-50BS-180	180 "	260 $\begin{smallmatrix} 0 \\ -0.032 \end{smallmatrix}$	105	"	225	"	6	1002	74
NTB-50BS-200	200 $\begin{smallmatrix} +0.046 \\ 0 \end{smallmatrix}$	290 "	130	100	250	"	7	1434	117
NTB-50BS-220	220 "	320 $\begin{smallmatrix} 0 \\ -0.036 \end{smallmatrix}$	135	"	275	"	8	1577	118
NTB-50BS-240	240 "	340 "	140	"	300	9	"	1720	"
NTB-50BS-260	260 $\begin{smallmatrix} +0.052 \\ 0 \end{smallmatrix}$	370 "	150	110	325	"	7	2072	143
NTB-50BS-280	280 "	400 "	155	120	350	"	6	2455	172
NTB-50BS-300	300 "	430 $\begin{smallmatrix} 0 \\ -0.040 \end{smallmatrix}$	165	120	375	"	7	2630	"

选择使用耐特衬套的理由 Reasons of Choosing the NTB Bushes



固体润滑轴承是以高强度铜合金为基体，并在铜合金上开出排列有序、大小适当的空穴，再镶嵌固体润滑剂而成的轴承。

Solid lubricant bearings are produced based on the high-intensity bronze alloy with orderly arranged pores of appropriate size to contain solid lubricants.



典型应用 Typical Applications

目前已广泛运用于各种机械的滑动部位，如自动化机械设备（伸缩、摇摆、滑动、弯曲、回旋、回转部位）油压气缸导套、齿轮泵、纺织机械、自动售货机、塑胶成型机、压铸机、橡胶机械、烟草机、健身器材、办公机械、液压搬运车、汽机车、摩托车、农林机械、中酸、强碱场合，例如：化工中酸碱流量计、泵、阀，印染机械、海洋工业耐腐蚀润滑部位、各种齿轮油泵、柱塞泵、叶片泵等场合，对流体润滑或境界润滑条件下的中高压齿轮泵尤其适用。

It is widely used of slide parts of different machines, for example, automatization machine device (flex, sway, slide, bend, convolute) cylinder bushes, gear pump, textile machines, auto machines, plastic moulding machines, die-casting machines, ubber machines, tobacco machines, sports machines, OA machines, hydraulic-pressure convey car, auto cars, motorcycle, agricultural machines, middle Acid, strong acid occasion, for instance, acide & alkali flowmeter in chemical, pump, valve, printing and dyeing machines, seawater anti-corrosion lubrication parts, gear pumps, plunger, vane pumps etc., It is the best choice for the bushes in various kinds of gear pumps as well as plunger, vane pumps and so on.

嘉善耐特精密机械有限公司

- 地址: 浙江省嘉善县西塘工贸开发区
- 邮编: 314102
- 电话: 0573-84569666 84569668
- 传真: 0573-84569688
- 邮件: naitepm@163.com
- 网址: www.ntpm.cn

JIASHAN NAITE PRECISION MECHINERY CO., LTD.

- Address: Xitang Industrial Development Zone,
Jiashan, Zhejiang, China
- Post Code: 314102
- Tel: 0086-573-84569666 84569668
- Fax: 0086-573-84569688
- E-mail: naitepm@163.com
- Website: www.ntpm.cn