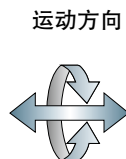




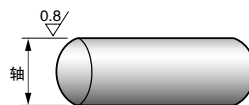
请从适用的内径、外径、长度中选择零件号  
(例)内径15mm、长度10mm的情况下

**NTB-10 - 1510**

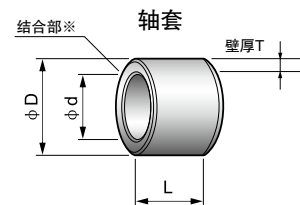
请指定上述零件号



运动方向



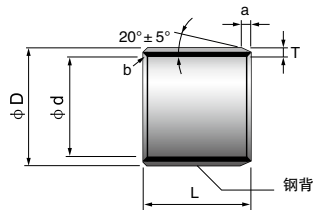
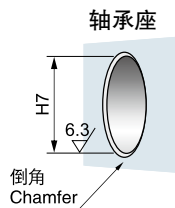
对偶轴



※结合部对于轴旋转没有影响，但尽量避免安装在负荷大的部位处压入。

轴 shaft	座孔housing		内径		外径		壁厚		长度 L <sub>-0.40</sub> <sup>0</sup>				
	H7		∅ d		∅ D		T		4	5	6	8	10
5	-0.010 -0.022	7	+0.015 0	5	7	+0.055 +0.025	1.0	+0.005 -0.020		0505			
6	-0.013 -0.028	8	"	6	8	"	"	"	0604		0606	0608	0610
7	"	9	"	7	9	"	"	"					
8	"	10	"	8	10	"	"	"			0806	0808	0810
10	"	12	+0.018 0	10	12	+0.065 +0.030	"	"				1008	1010
12	-0.016 -0.034	14	"	12	14	"	"	"				1208	1210
13	"	15	"	13	15	"	"	"					1310
14	"	16	"	14	16	+0.065 +0.035	"	"		1405			1410
15	"	17	"	15	17	"	"	"					1510
16	"	18	"	16	18	"	"	"					1610
17	"	19	+0.021 0	17	19	+0.075 +0.035	"	"					1710
18	"	20	"	18	20	"	"	"					1810
20	-0.020 -0.041	23	"	20	23	"	1.5	+0.005 -0.025					2010
22	"	25	"	22	25	"	"	"					2210
24	"	27	"	24	27	"	"	"					
25	"	28	"	25	28	"	"	"					2510
28	"	32	+0.025 0	28	32	+0.085 +0.045	2.0	+0.005 -0.030					
30	"	34	"	30	34	"	"	"					
32	-0.025 -0.050	36	"	32	36	"	"	"					
35	"	39	"	35	39	"	"	"					
37	"	41	"	37	41	"	"	"					
38	"	42	"	38	42	"	"	"					
40	"	44	"	40	44	"	"	"					

注：本公司可以按客户需求，生产非标产品。Note: we can produce as per your drawings.



a: 外径倒角 内径 $\varnothing$ 10以上(mm)

T	1.0	1.5	2.0
a	0.5	0.8	1.0

b: 内径倒角 内径 $\varnothing$ 10以上(mm)

T	1.0	1.5	2.0
b	C0.5	C0.8	C1.0

※ 内径  $\varnothing$ 10不到的内外径倒角去除毛刺程度即可

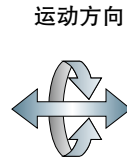
长度 L $\begin{smallmatrix} 0 \\ -0.40 \end{smallmatrix}$								内径
12	15	20	25	30	35	40	50	$\varnothing d$
								5
								6
								7
0812	0815							8
1012	1015	1020						10
1212	1215	1220	1225					12
		1320						13
1412	1415	1420	1425					14
1512	1515	1520	1525					15
1612	1615	1620	1625					16
		1720						17
	1815	1820	1825					18
	2015	2020	2025	2030				20
	2215	2220	2225	2230				22
	2415	2420	2425	2430				24
	2515	2520	2525	2530			2550	25
	2815	2820	2825	2830				28
	3015	3020	3025	3030		3040	3050	30
		3220		3230				32
		3520		3530	3535	3540		35
		3720						37
		3820		3830		3840		38
		4020		4030		4040	4050	40



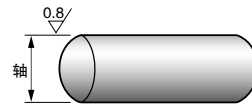
请从适用的内径、外径、长度中选择零件号  
(例)内径60mm、长度50mm的情况下

**NTB-10 - 6050**

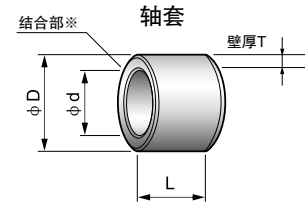
请指定上述零件号



运动方向



对偶轴

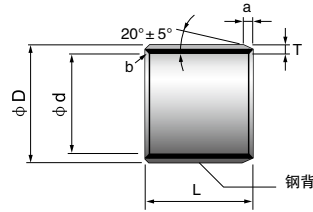
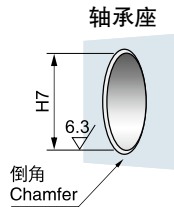


结合部※ 轴套

※结合部对于轴旋转没有影响，但尽量避免安装在负荷大的部位处压入。

轴 shaft		座孔housing		内径		外径		壁厚		长度 L <sup>0</sup> <sub>-0.40</sub>				
		∅ H7		∅ d		∅ D		T		20	25	30	40	50
45	<sup>-0.025</sup> / <sub>-0.050</sub>	50	<sup>+0.025</sup> / <sub>0</sub>	45	50	<sup>+0.085</sup> / <sub>+0.045</sub>	2.5	<sup>+0.005</sup> / <sub>-0.040</sub>	4520	4525	4530	4540	4550	
50	"	55	<sup>+0.030</sup> / <sub>0</sub>	50	55	<sup>+0.100</sup> / <sub>+0.055</sub>	"	"	5020		5030	5040	5050	
55	<sup>-0.030</sup> / <sub>-0.060</sub>	60	"	55	60	"	"	"			5530	5540	5550	
60	"	65	"	60	65	"	"	"			6030	6040	6050	
65	"	70	"	65	70	"	"	"			6530	6540	6550	
70	"	75	"	70	75	"	"	"				7040	7050	
75	"	80	"	75	80	"	"	"			7530	7540	7550	
80	<sup>0</sup> / <sub>-0.030</sub>	85	<sup>+0.035</sup> / <sub>0</sub>	80	85	<sup>+0.120</sup> / <sub>+0.070</sub>	"	<sup>-0.010</sup> / <sub>-0.060</sub>				8040	8050	
85	<sup>0</sup> / <sub>-0.035</sub>	90	"	85	90	"	"	"				8540		
90	"	95	"	90	95	"	"	"				9040	9050	
95	"	100	"	95	100	"	"	"					9550	
100	"	105	"	100	105	"	"	"					10050	
105	"	110	"	105	110	"	"	"						
110	"	115	"	110	115	"	"	"						
115	"	120	"	115	120	"	"	"						
120	"	125	<sup>+0.040</sup> / <sub>0</sub>	120	125	<sup>+0.170</sup> / <sub>+0.100</sub>	"	<sup>-0.035</sup> / <sub>-0.085</sub>						
125	<sup>0</sup> / <sub>-0.040</sub>	130	"	125	130	"	"	"						
130	"	135	"	130	135	"	"	"						
135	"	140	"	135	140	"	"	"						
140	"	145	"	140	145	"	"	"						
150	"	155	"	150	155	"	"	"						
160	"	165	"	160	165	"	"	"						
180	"	185	<sup>+0.046</sup> / <sub>0</sub>	180	185	<sup>+0.210</sup> / <sub>+0.130</sub>	"	"						
190	<sup>0</sup> / <sub>-0.046</sub>	195	"	190	195	"	"	"						
200	"	205	"	200	205	"	"	"						
220	"	225	"	220	225	"	"	"						
250	"	255	<sup>+0.052</sup> / <sub>0</sub>	250	255	<sup>+0.260</sup> / <sub>+0.170</sub>	"	"						
260	"	265	"	260	265	"	"	"						

注：本公司可以按客户需求，生产非标产品。Note: we can produce as per your drawings.



a: 外径倒角(mm)

T	2.0	2.5
a	1.0	1.0

b: 内径倒角(mm)

T	2.0	2.5
b	C0.5	C0.5

长度 $L_{-0.40}^0$					内径
60	70	80	100	115	$\varnothing d$
					45
5060					50
5560					55
6060	6070				60
6560	6570				65
7060	7070	7080			70
7560	7570	7580			75
8060	8070	8080	80100		80
8560		8580	85100		85
9060		9080	90100		90
9560		9580	95100		95
10060		10080		100115	100
10560		10580		105115	105
11060		11080		110115	110
11560		11580			115
12060		12080	120100		120
			125100		125
13060		13080	130100		130
		13580	135100		135
14060		14080	140100		140
15060		15080	150100		150
16060		16080	160100	160115	160
		18080	180100		180
		19080	190100		190
20060		20080	200100		200
		22080	220100		220
		25080	250100		250
		26080	260100		260